



Stevenson-Carson School District Long Range Planning Work

October 22, 2018

Where we have been

- District had long range plan in 2002
- Feb. 13 (CES) and March 6 (WRMS/SHS) Round Table Discussions
- April 10 first meeting of Long Range Planning Committee
- May 1 – State of the district facilities
- May 15 – A look at our current and desired academic programs
- May 29 – District Dream – the perfect SCSD facilities structure
- June 12 – Refine options identified in previous meetings
- Sept. 11- Gain more clarity to the three options with cost info
- Sept. 25 – Formalize options and prepare for Oct. 9 Round Table

Information

- The committee has spent 14+ hours learning and discussing the district facilities.
- All the agendas and documents can be found on the district web site. [Scsd303.org/department/facilities/long range planning](https://scsd303.org/department/facilities/long-range-planning)
- Questions can be directed to Brian Howe 427-5674 or howeb@scsd303.org

Baselines of understanding

- Enrollment projections show slow growth over 20 years
- Configurations for options are K-5, 6-8, 9-12
- SHS will remain at its current location in some form
- Projected construction costs are really rough at going rates of
 - New construction \$275-500/ sf
 - Modernization/remodel \$100/450/sf

Stevenson Elementary	Carson Elementary	WRMS/SHS
38,135	49,183	94,567

- Upgrade our facilities with fire/safety/energy improvements as well as to educational standards

Where are we going

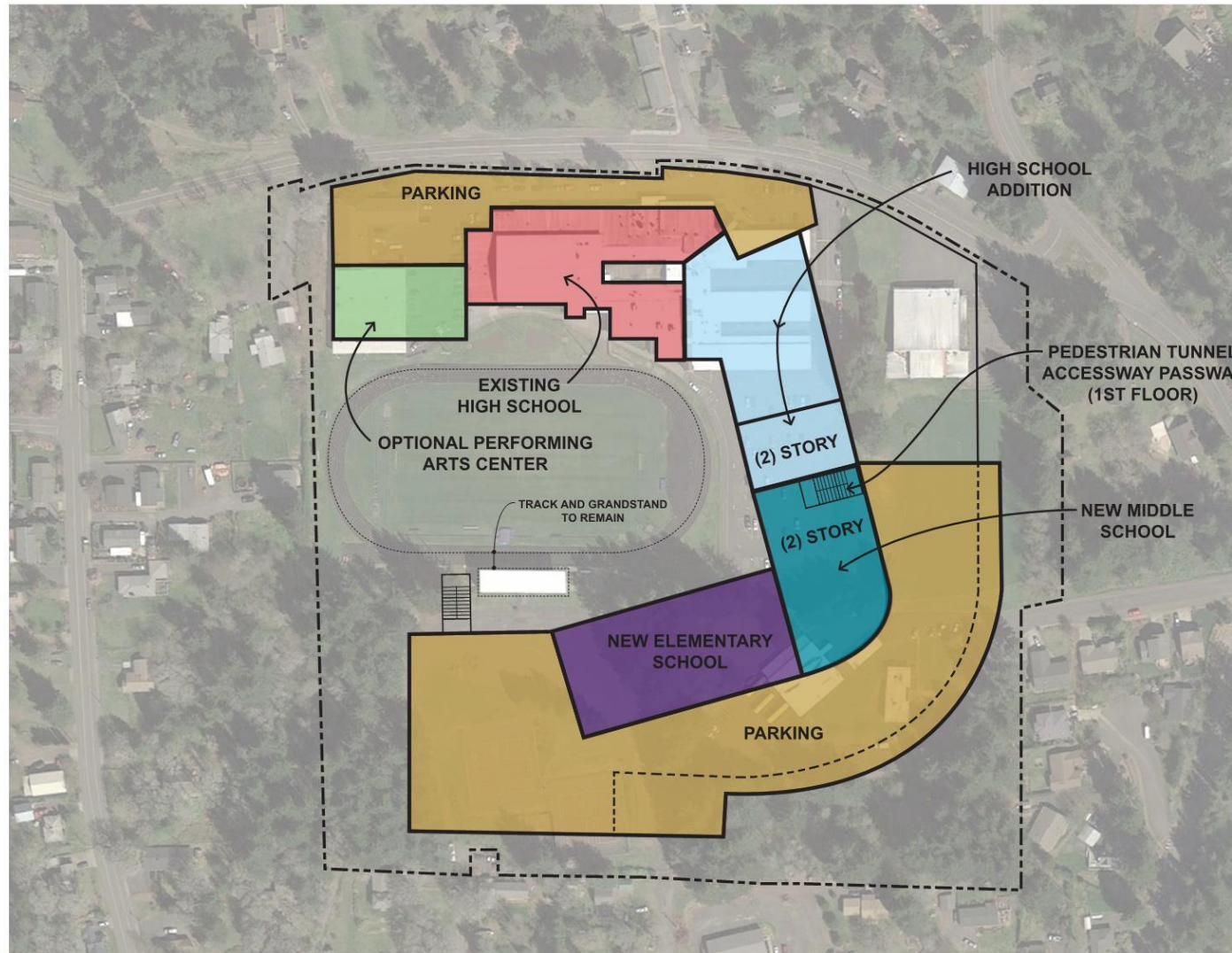
- Nothing is finalized and no timeline has been established
- Overall financing will be discussed later as we get to the more detail level of planning(future phase)
- The long range plan will allow the district to focus its finances and seek grants and other funding sources in the short term to support the plan
- Input from the Round Table will be reviewed to determine next steps

Option 1

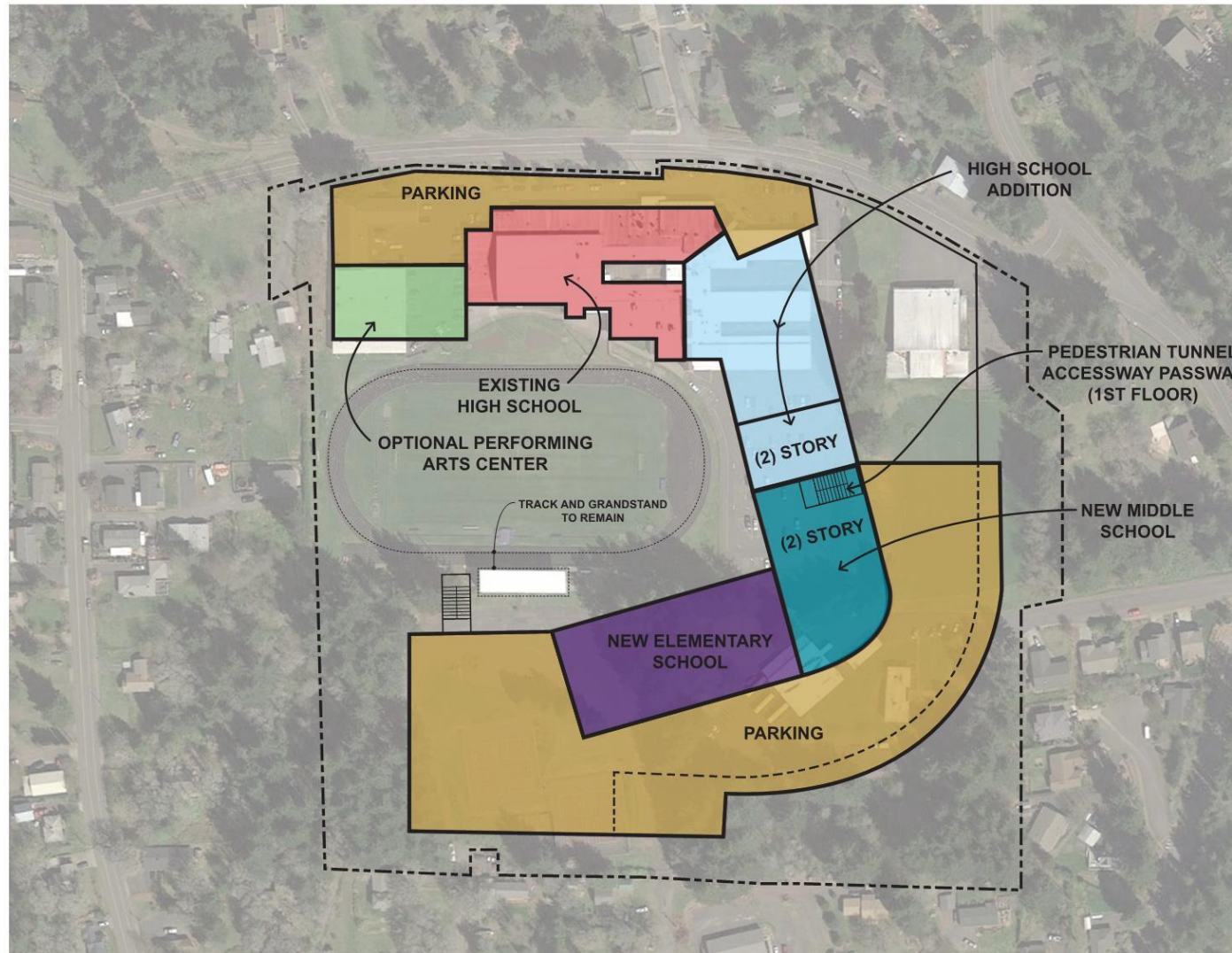
- Synopsis – All grades on SHS site. One and two story buildings. K-5 on one level, 6-8, 9-12 on other levels. Athletics possibly moved to CES site. Admin, bus garage, preschool move to SES site.
- New construction: 100,000 sf
- Modernization/remodel: 80,000 sf

	Stevenson Elementary	Carson Elementary	WRMS/SHS
	38,135	49,183	94,567
New	8,000		92,000
Remodel	12,000		68,000

Option 1 Concept



Option 1 Concept



Option 1 Concept



Option 1 Concept



Option 1-Pros

- Shared resources between grades
- Utilization of staff to maximum efficiency
- Community hub – performing arts, additional gym
- Minimize student transitions in regards to transportation
- Possibly less utility costs
- Carson becomes a community center
- Mentoring, older kids with younger kids
- SES could hold supplemental classes

Option 1 - Cons

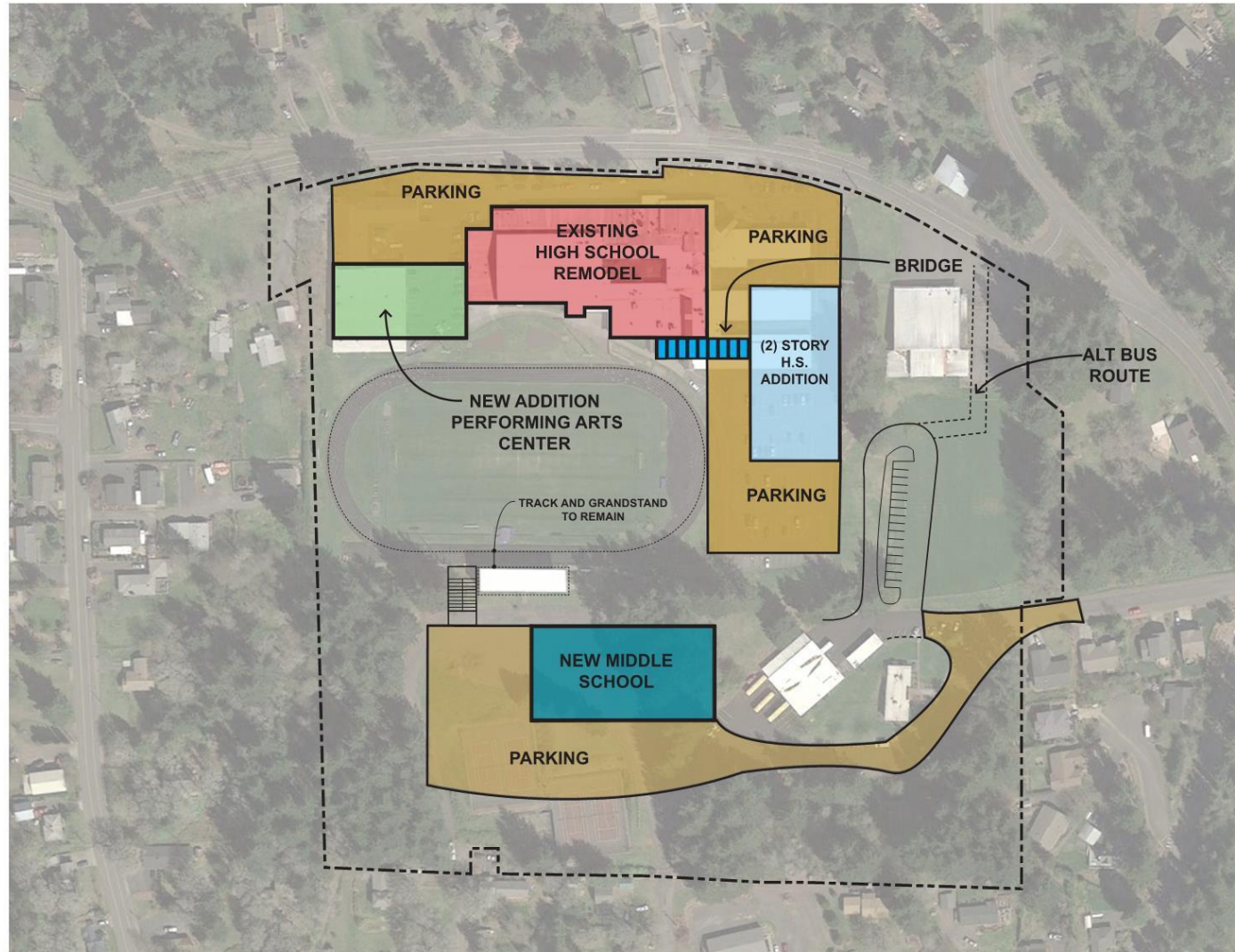
- Organization – how to accomplish idea
- Transportation of students to CES site for sports
- Parking
- Carson community loses their school
- Possibly more utility costs
- Inappropriate influences of older kids to younger kids
- Demolition/remodeling costs to complete building
- Infrastructure costs
- Elementary playground space
- Gym space for P.E. and athletics
- Tennis Courts have to be moved
- Green space on campus
- Practice time if practices are at CES.
- Kanaka Creek tributary runs through the property

Option 2

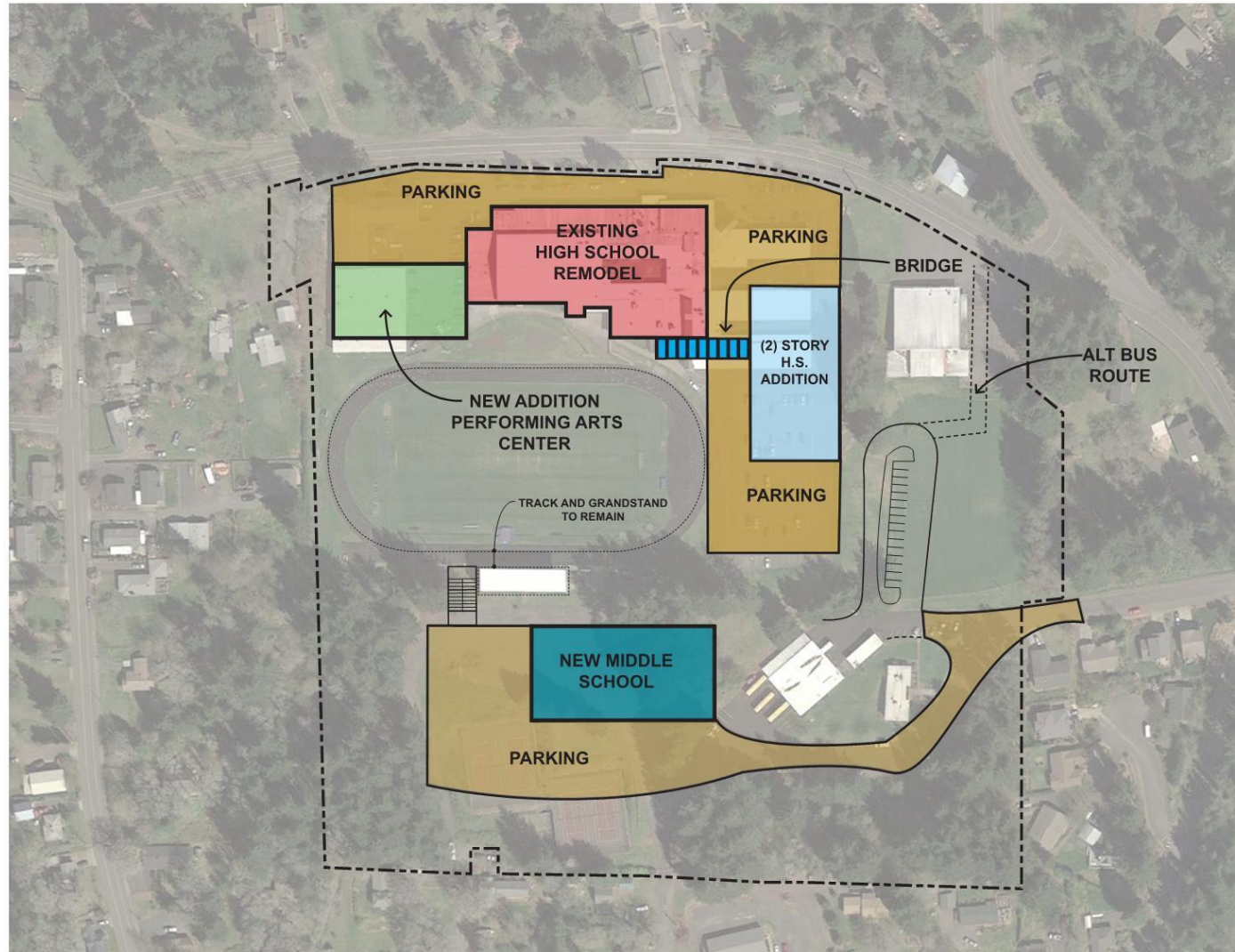
- Synopsis – All facilities located in Stevenson but multiple buildings. PreK-5 in SES building, 6-8 in a new building on SHS site, 9-12 in SHS building. Athletics and bus garage move to CES site.
- New construction: 133,000
- Modernization/remodel: 49,000

	Stevenson Elementary	Carson Elementary	WRMS/SHS
	38,135	49,183	94,567
New	24,000		109,000
Remodel	6,000		43,000

Option 2 Concept



Option 2 Concept



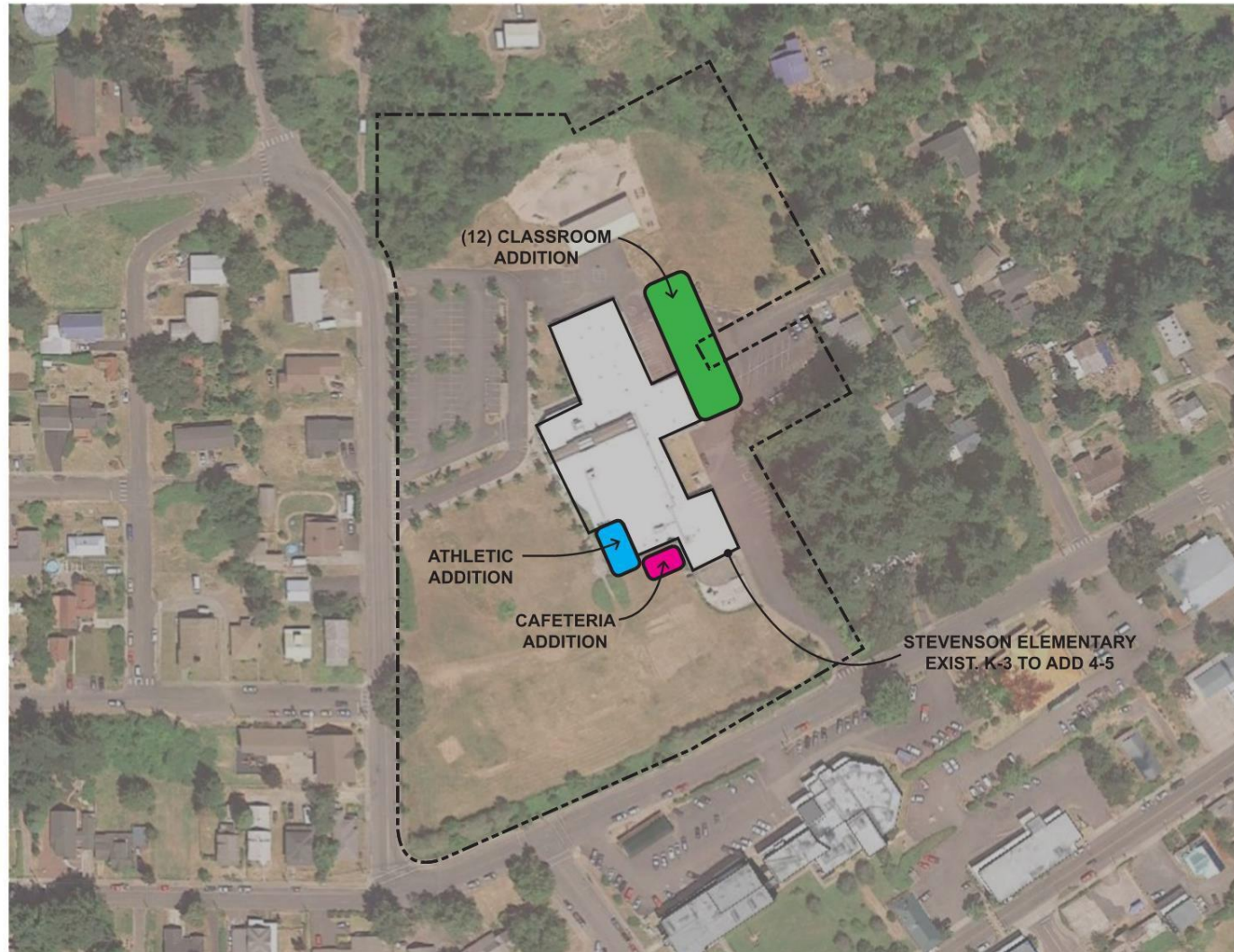
Option 2 Concept



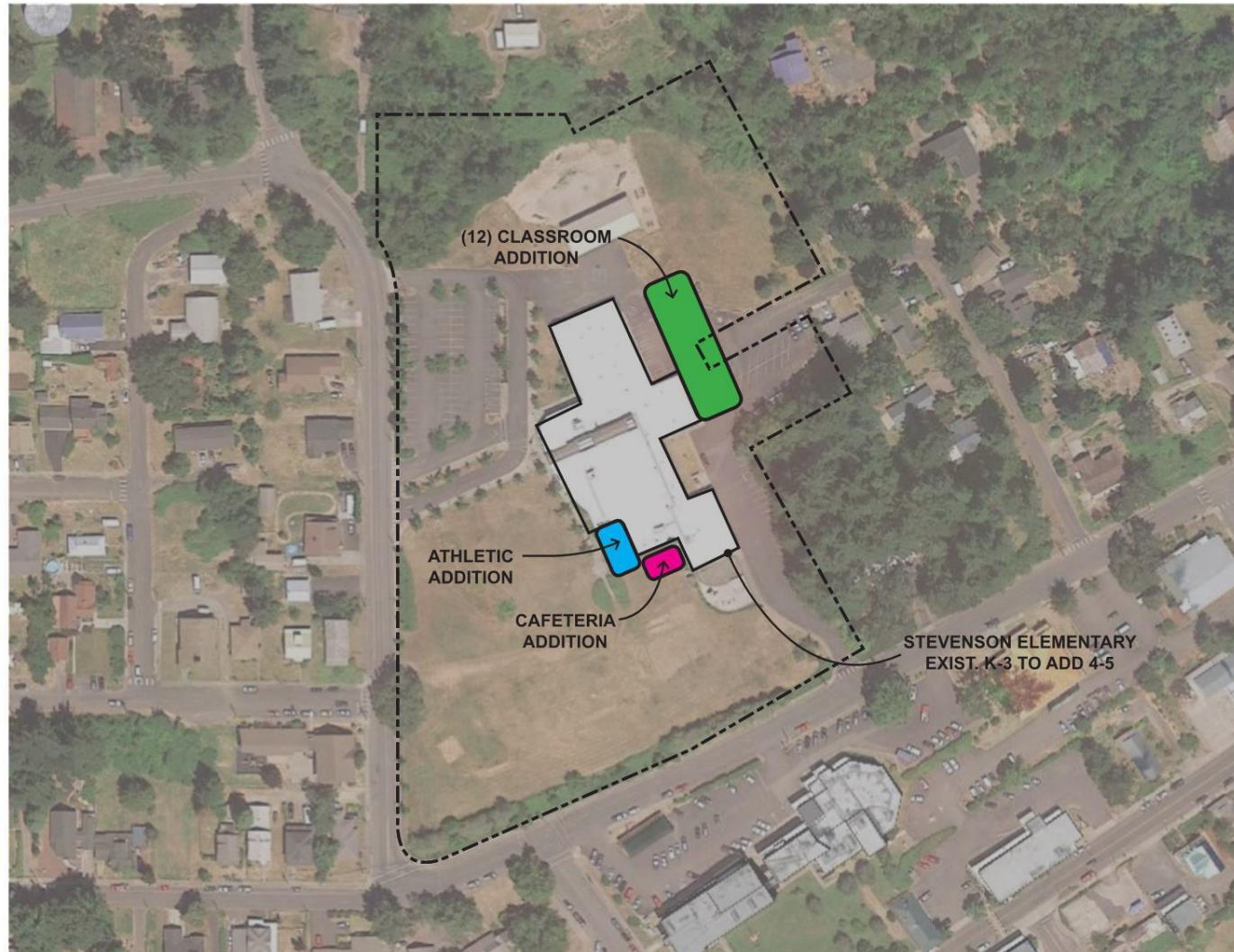
Option 2 Concept



Option 2 Concept



Option 2 Concept



Option 2-Pros

- Middle School could be done in phases
- Easier to accomplish – add on to SES
- Efficiency of staff and resources
- Community hub- performing arts, additional gym
- Minimize student transitions in regards to transportation
- Possibly less utility costs
- Carson becomes a community center

Option 2 - Cons

- Loss of school in Carson
- Loss of long range savings on staff efficiencies
- Parking
- Infrastructure costs
- Elementary Playground space
- Gym space for P.E. and athletics
- Practice time if practices are at CES-could be non issue
- Kanaka Creek tributary runs through the property

Option 3A

- Synopsis – Keep the buildings currently in use and do repairs to upgrade them with fire/safety/energy improvements as well as to educational standards. SES K-5; CES 6-8; SHS 9-12
- New construction: 36,000
- Modernization/remodel: 140,200

	Stevenson Elementary	Carson Elementary	WRMS/SHS
	38,135	49,183	94,567
New	24,000	12,000	
Remodel	6,000	49,200	85,000

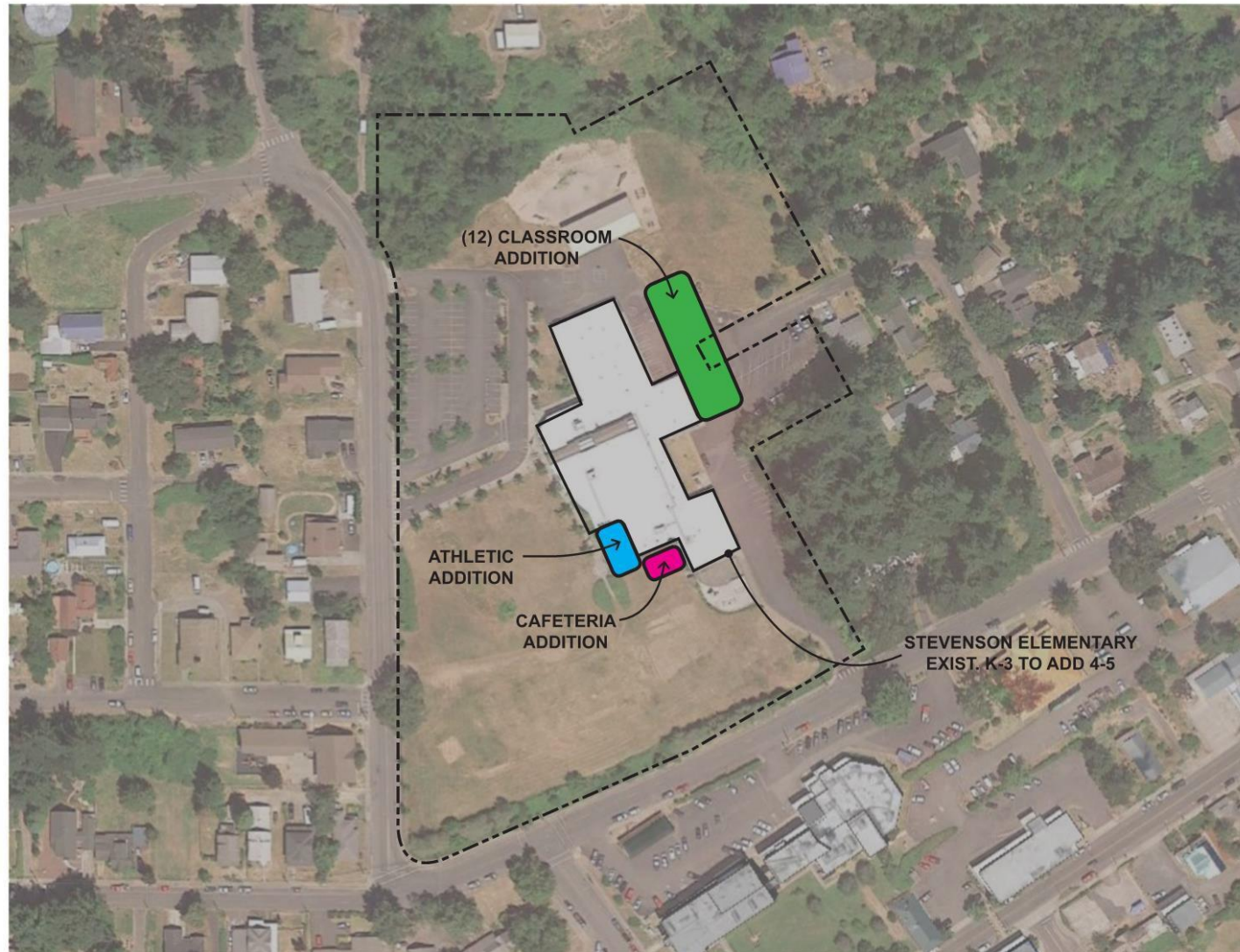
Option 3A Concept



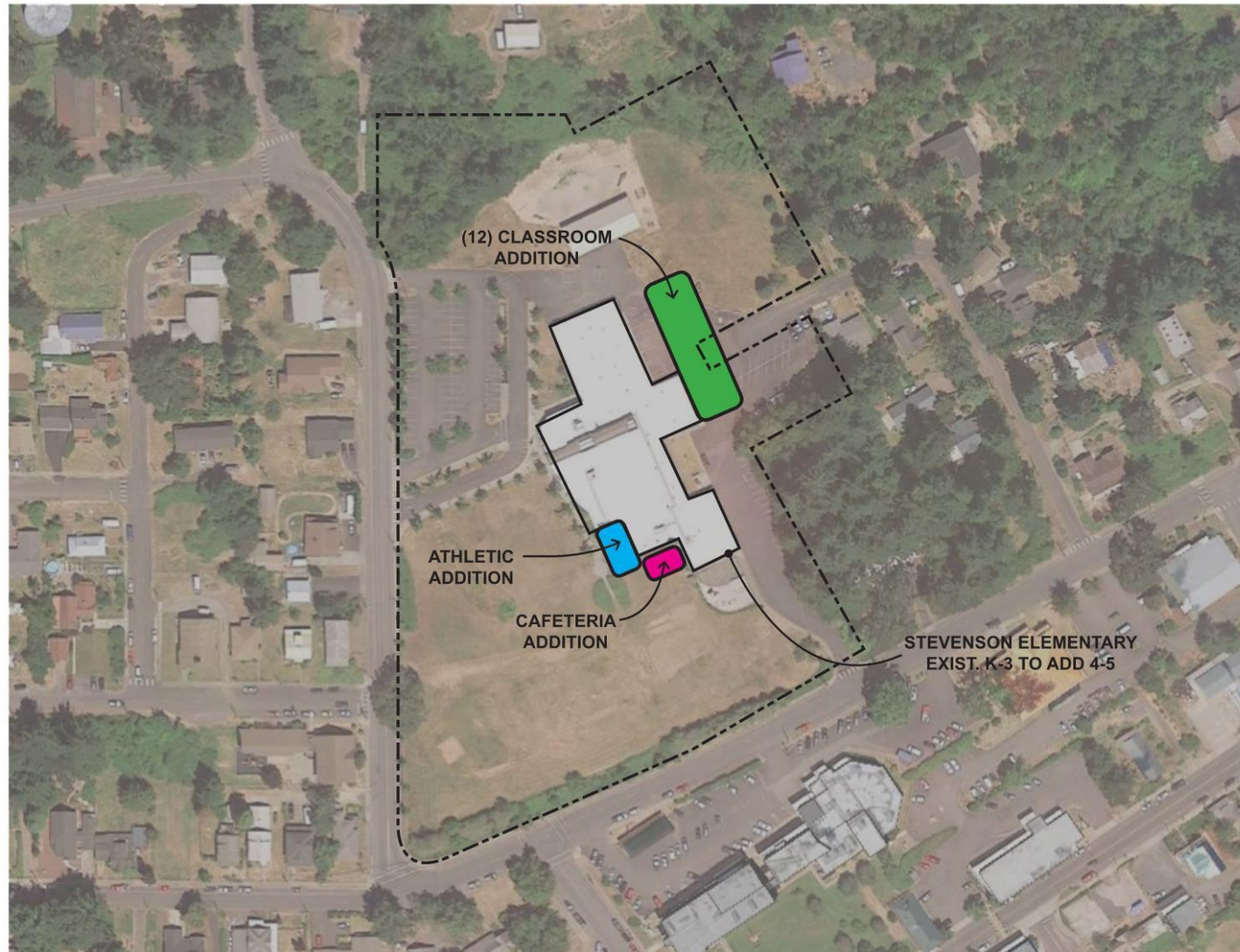
Option 3A Concept



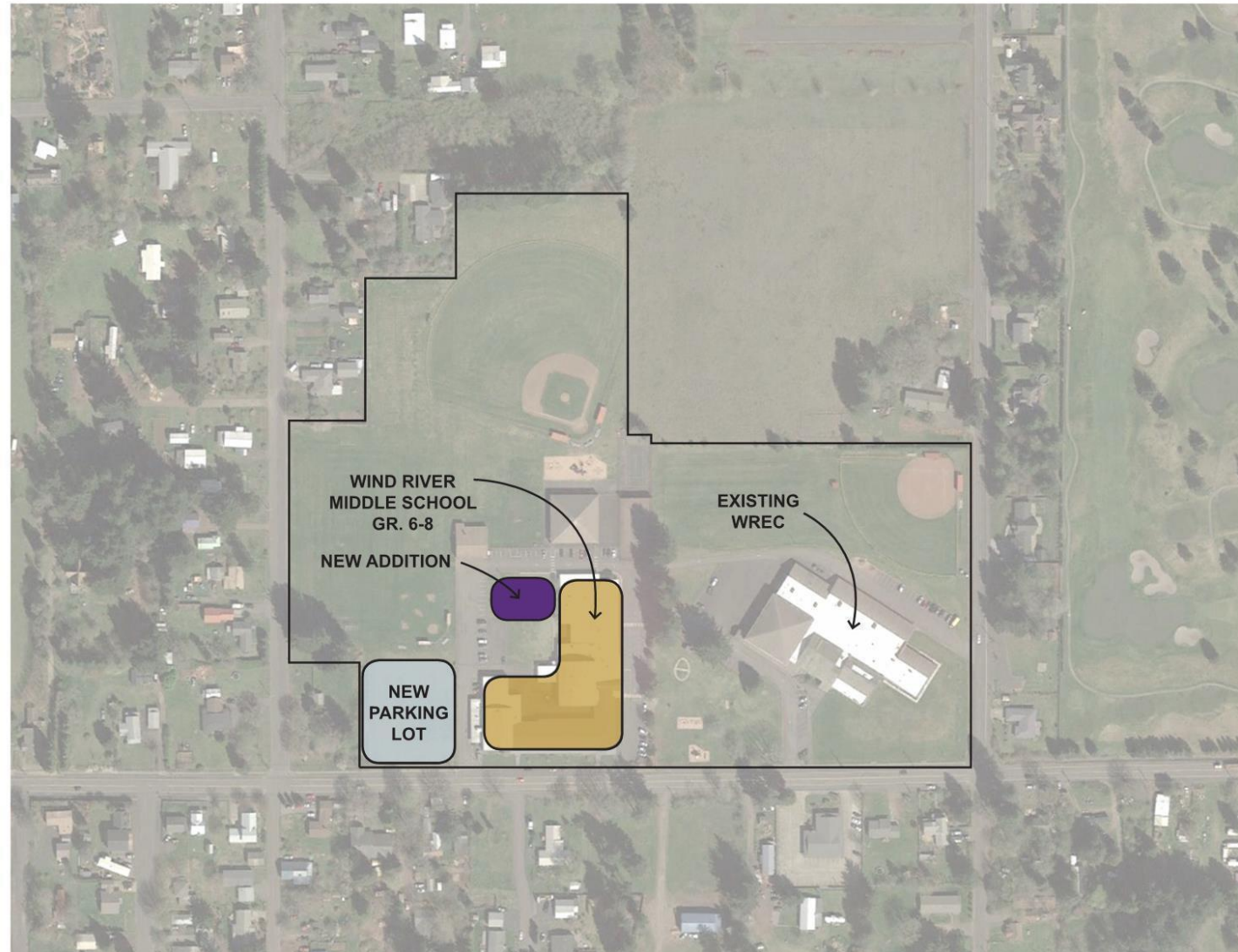
Option 3A Concept



Option 3A Concept



Option 3A Concept



Option 3A Concept



Option 3B – Committee's preference

- Synopsis – Keep the buildings currently in use and do repairs to upgrade them with fire/safety/energy improvements as well as to educational standards. SES K-5; WREC 6-8; SHS 9-12
- New construction: 38,900
- Modernization/remodel: 139,730

	Stevenson Elementary	WREC (CES)	WRMS/SHS
	38,135	63,617(49,183)	94,567
New	24,000	14,900	
Remodel	6,000	48,730	85,000



OPTION 3B - CARSON ELEMENTARY SCHOOL CONVERT TO MIDDLE SCHOOL
SCSD - SITESTUDY



OPTION 3B - CARSON ELEMENTARY SCHOOL CONVERT TO MIDDLE SCHOOL
SCSD - SITESTUDY

Option 3-Pros

- Could be done in phases
- Minimal repairs could be cheapest
- Carson community keeps a school
- Separation of grades
- Fields and gyms are utilized – regulation gym at WREC
- CES/WREC space utilized for other purposes

Option 3 - Cons

- Repairing minimal items could lead to bigger repairs and more costs
- CTE program
- Loss of long range savings on staff efficiencies

Square footage for all options

	sf	Stevenson Elementary	Carson Elementary	WREC	WRMS/SHS
		38,135	49,183	63,617	94,567
Option 1	New	8,000			92,000
	Remodel	12,000			68,000
Option 2	New	24,000			109,000
	Remodel	6,000			43,000
Option 3A	New	24,000	12,000		
	Remodel	6,000	49,200		85,000
Option 3B	New	24,000		14,900	
	Remodel	6,000		48,730	85,000

Next Steps

- Gather input and evaluate where we are
- Look at systems that can be updated through grants
- Identify specific requirements to each building
- Prioritize improvements for each building
- Get specific cost estimates
- Continue to engage community in the process
- Investigate financial options

Round Table Questions

- What are some additional Pros for option 3B?
 - What are some additional Cons for option 3B?
 - What didn't the committee consider that I wish they would explore further?
-
- All documents from today can be found on the district's web site www.scsd303.org under recent news.
 - Please complete an exit sheet either paper/pencil or electronically on the website.

Round Table Questions

- What are some additional Pros for option 3B?
 - What are some additional Cons for option 3B?
 - What didn't the committee consider that I wish they would explore further?
-
- All documents from today can be found on the district's web site www.scsd303.org under recent news.
 - Please complete an exit sheet either paper/pencil or electronically on the website.