



# Stevenson-Carson School District Long Range Planning Work

October 9, 2018

# Where we have been

- District had long range plan in 2002
- Feb. 13 (CES) and March 6 (WRMS/SHS) Round Table Discussions
- April 10 first meeting of Long Range Planning Committee
- May 1 – State of the district facilities
- May 15 – A look at our current and desired academic programs
- May 29 – District Dream – the perfect SCSD facilities structure
- June 12 – Refine options identified in previous meetings
- Sept. 11- Gain more clarity to the three options with cost info
- Sept. 25 – Formalize options and prepare for Oct. 9 Round Table

# Information

- The committee has spent 14+ hours learning and discussing the district facilities.
- All the agendas and documents can be found on the district web site. [Scsd303.org/department/facilities/long range planning](https://scsd303.org/department/facilities/long-range-planning)
- Questions can be directed to Brian Howe 427-5674 or [howeb@scsd303.org](mailto:howeb@scsd303.org)

# Baselines of understanding

- Enrollment projections show slow growth over 20 years
- Configurations for options are K-5, 6-8, 9-12
- SHS will remain at its current location in some form
- Projected construction costs are really rough at going rates of
  - New construction \$275-500/ sf
  - Modernization/remodel \$100/450/sf
- Upgrade our facilities with fire/safety/energy improvements as well as to educational standards

# Where are we going

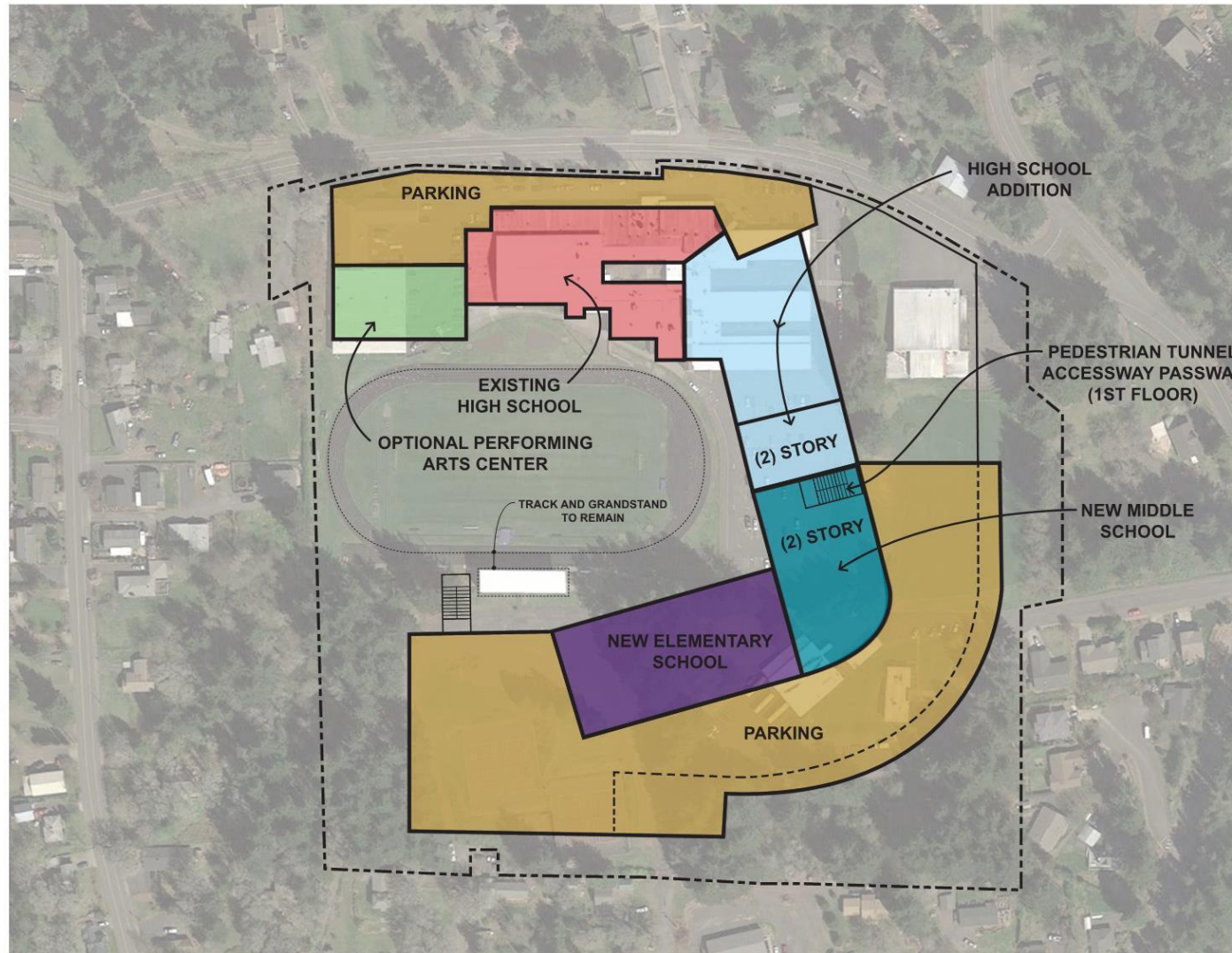
- Nothing is finalized and no timeline has been established
- Overall financing will be discussed later as we get to the more detail level of planning(future phase)
- The long range plan will allow the district to focus its finances and seek grants and other funding sources in the short term to support the plan
- Input from the Round Table will be reviewed to determine next steps

# Option 1

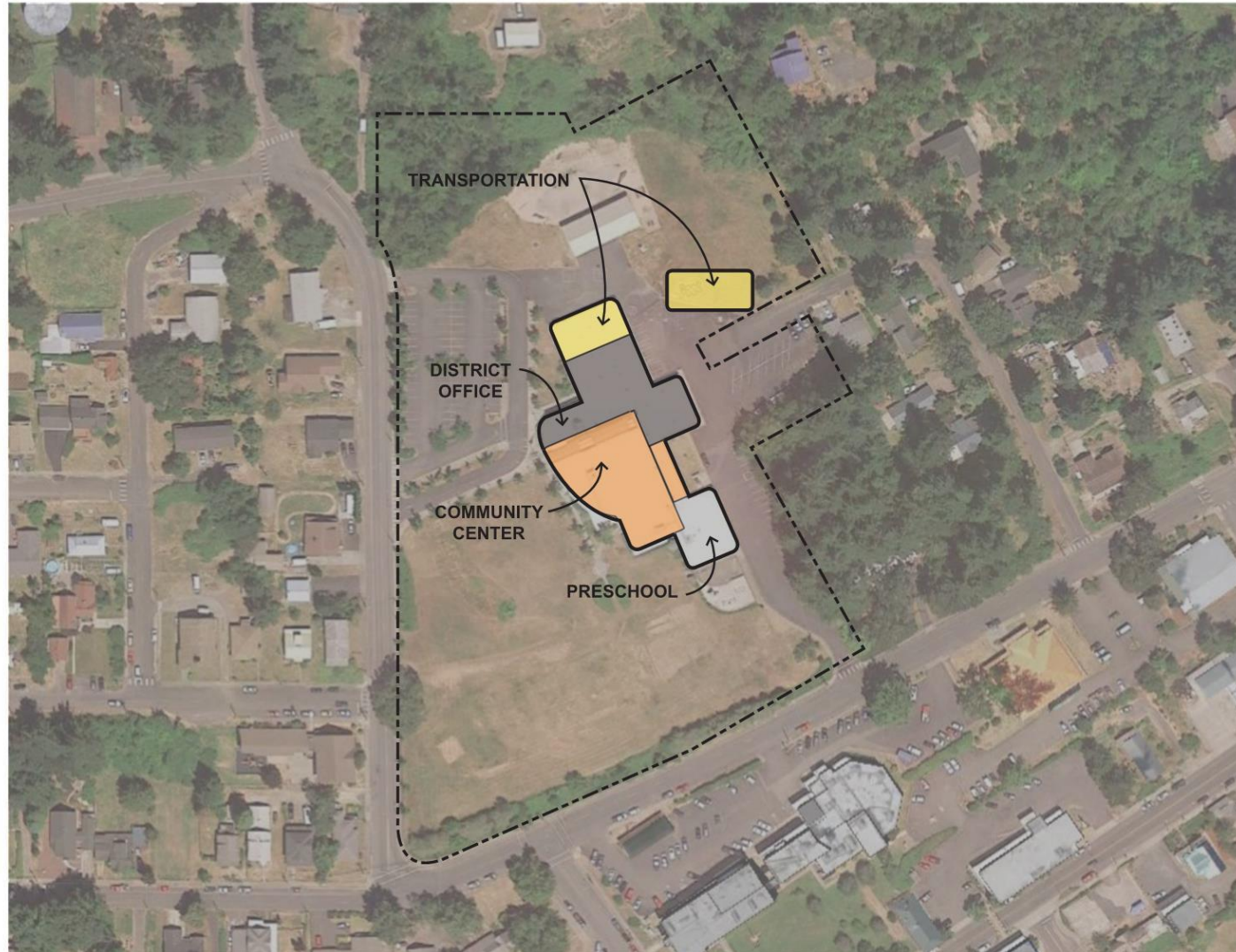
- Synopsis – All grades on SHS site. One and two story buildings. K-5 on one level, 6-8, 9-12 on other levels. Athletics possibly moved to CES site. Admin, bus garage, preschool move to SES site.
- New construction: 100,000 sf
- Modernization/remodel: 80,000 sf



# Option 1 Concept



# Option 1 Concept





# Option 1-Pros

- Shared resources between grades
- Utilization of staff to maximum efficiency
- Community hub – performing arts, additional gym
- Minimize student transitions in regards to transportation
- Possibly less utility costs
- Carson becomes a community center
- Mentoring, older kids with younger kids
- SES could hold supplemental classes

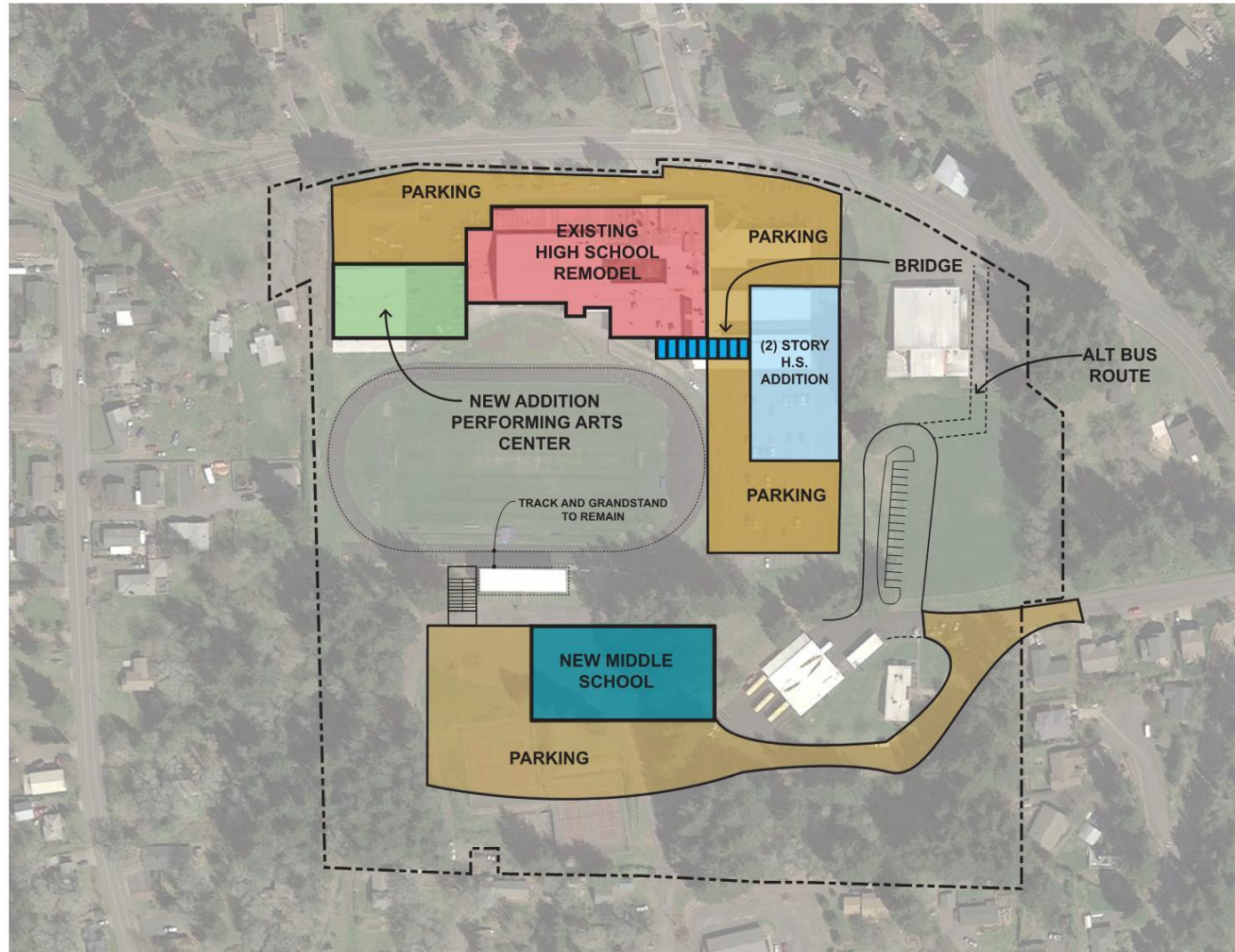
# Option 1 - Cons

- Organization – how to accomplish idea
- Transportation of students to CES site for sports
- Parking
- Carson community loses their school
- Possibly more utility costs
- Inappropriate influences of older kids to younger kids
- Demolition/remodeling costs to complete building
- Infrastructure costs
- Elementary playground space
- Gym space for P.E. and athletics
- Tennis Courts have to be moved
- Green space on campus
- Practice time if practices are at CES.
- Kanaka Creek tributary runs through the property

# Option 2

- Synopsis – All facilities located in Stevenson but multiple buildings. PreK-5 in SES building, 6-8 in a new building on SHS site, 9-12 in SHS building. Athletics and bus garage move to CES site.
- New construction: 133,000
- Modernization/remodel: 49,000

# Option 2 Concept

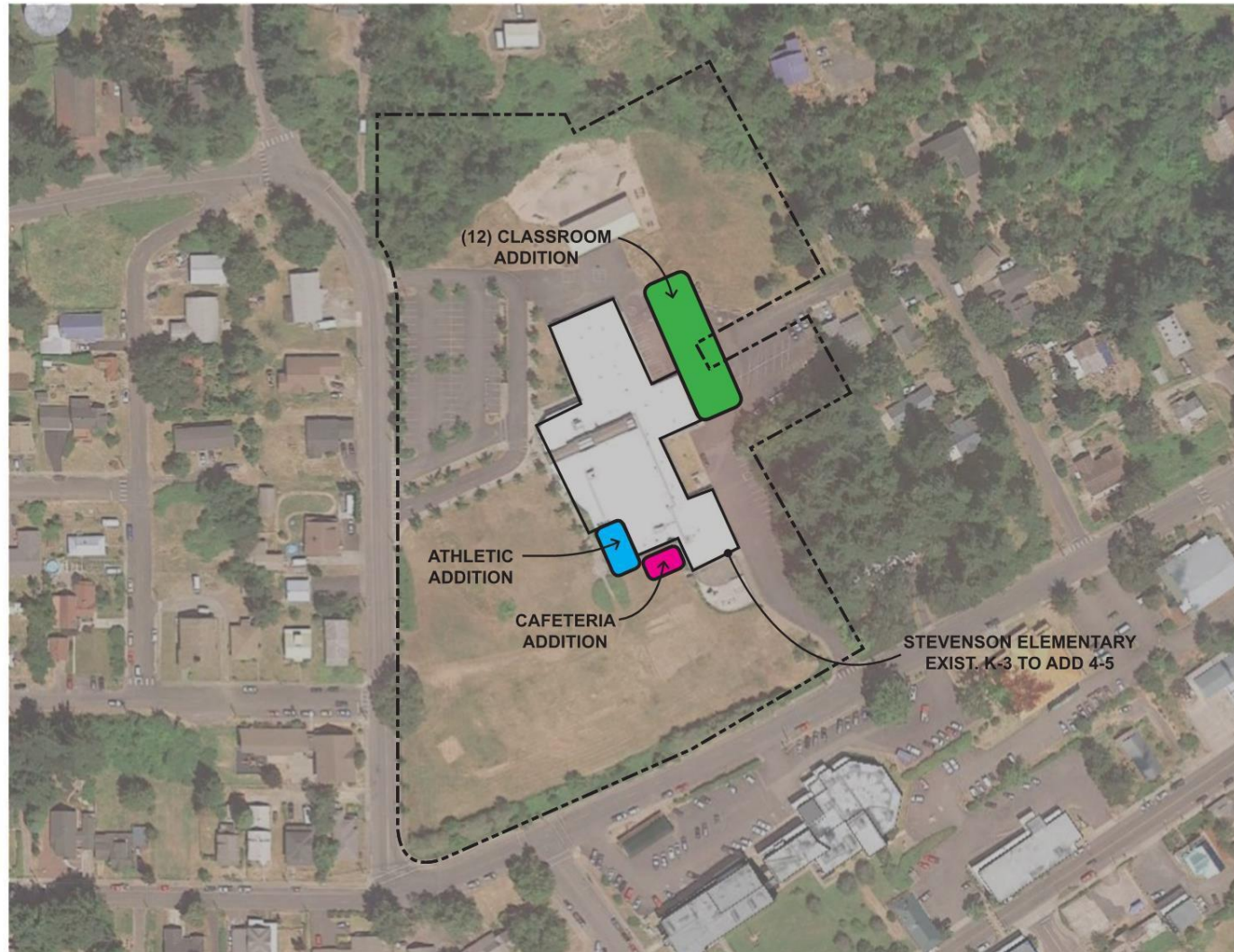




# Option 2 Concept



# Option 2 Concept





# Option 2-Pros

- Middle School could be done in phases
- Easier to accomplish – add on to SES
- Efficiency of staff and resources
- Community hub- performing arts, additional gym
- Minimize student transitions in regards to transportation
- Possibly less utility costs
- Carson becomes a community center

# Option 2 - Cons

- Loss of school in Carson
- Loss of long range savings on staff efficiencies
- Parking
- Infrastructure costs
- Elementary Playground space
- Gym space for P.E. and athletics
- Practice time if practices are at CES-could be non issue
- Kanaka Creek tributary runs through the property



# Option 3A

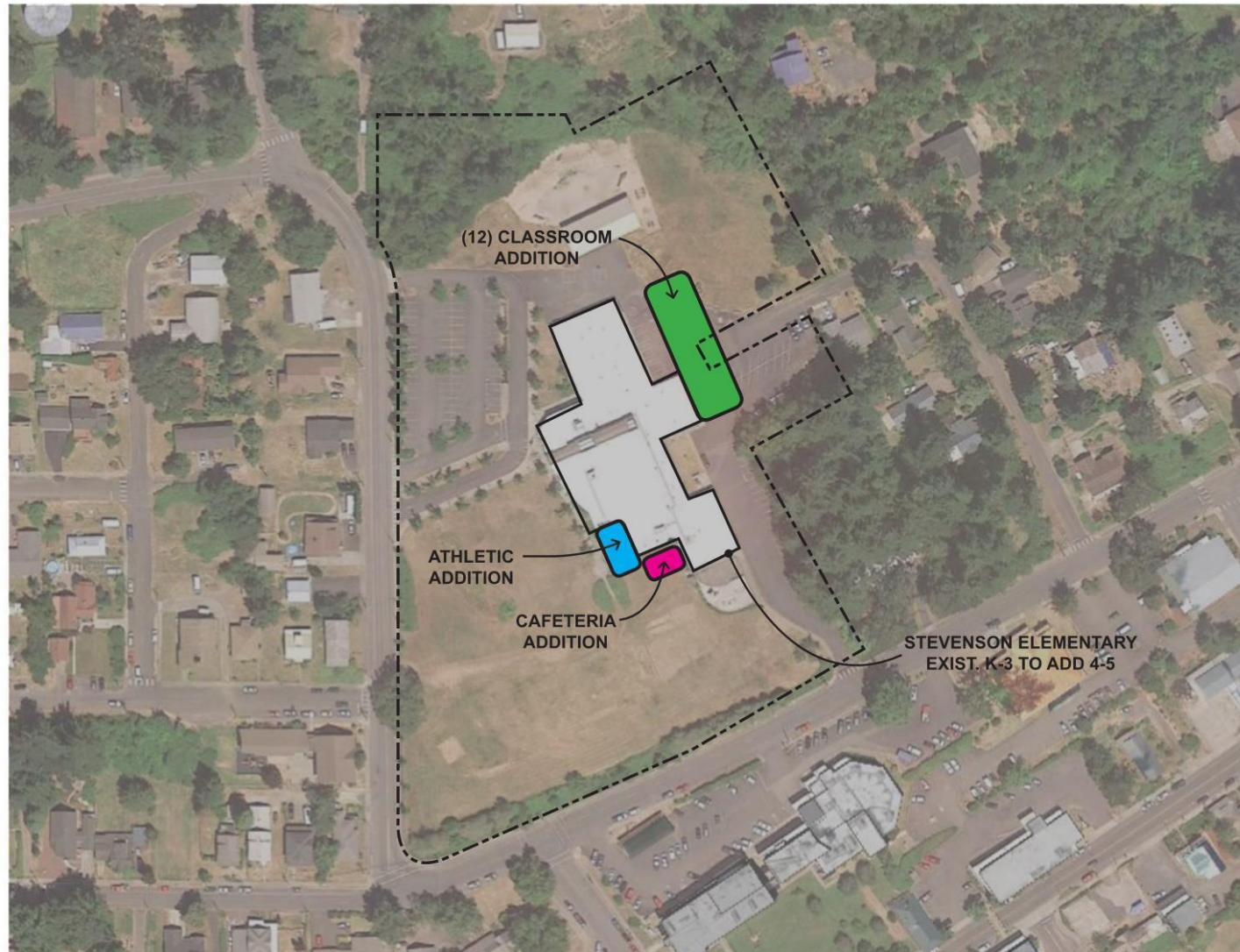
- Synopsis – Keep the buildings currently in use and do repairs to upgrade them with fire/safety/energy improvements as well as to educational standards. SES K-5; CES 6-8; SHS 9-12
- New construction: 36,000
- Modernization/remodel: 140,200

# Option 3A Concept

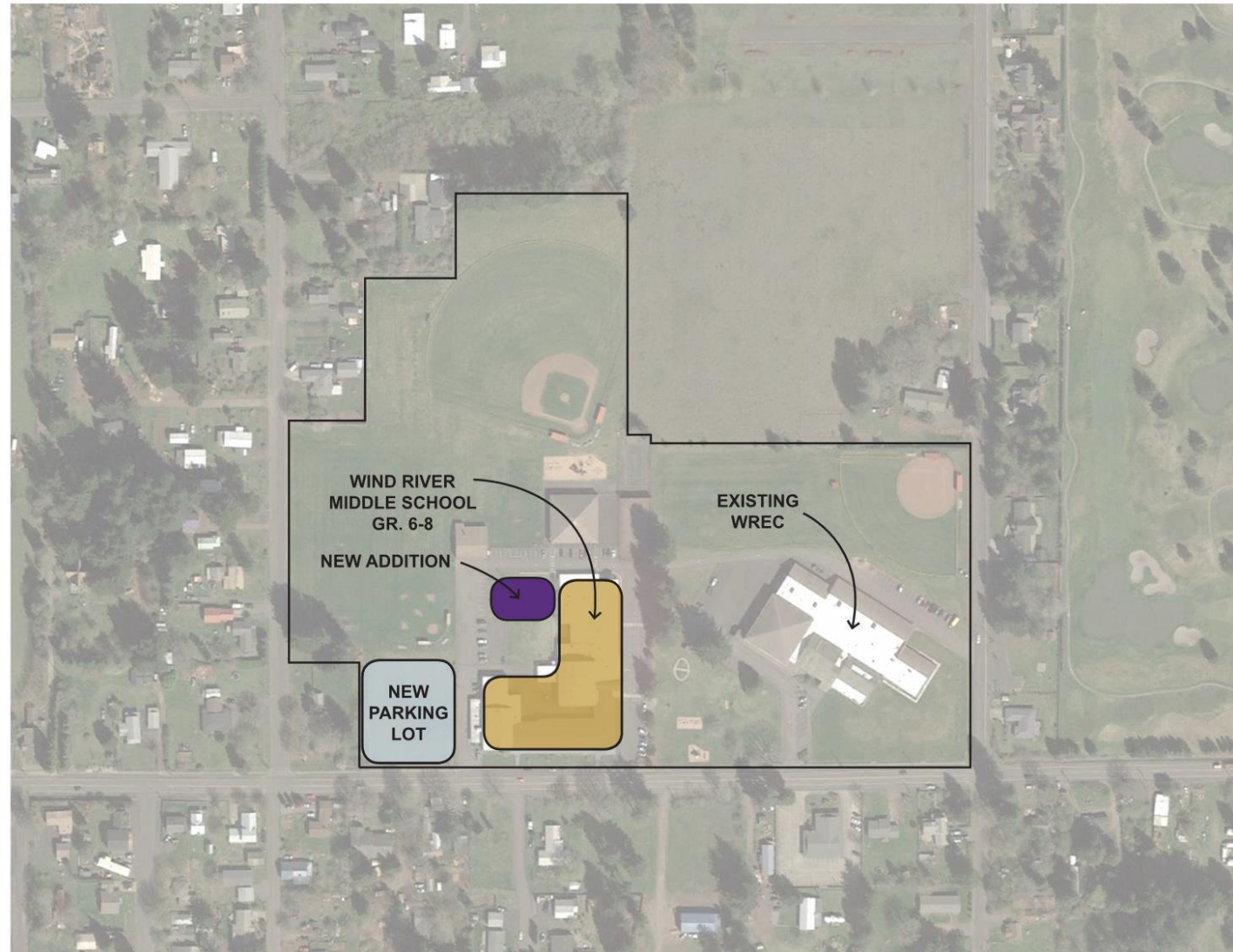




# Option 3A Concept



# Option 3A Concept





# Option 3B – Committee's preference

- Synopsis – Keep the buildings currently in use and do repairs to upgrade them with fire/safety/energy improvements as well as to educational standards. SES K-5; WREC 6-8; SHS 9-12
- New construction: 38,900
- Modernization/remodel: 139,730



OPTION 3B - CARSON ELEMENTARY SCHOOL CONVERT TO MIDDLE SCHOOL  
SCSD - SITESTUDY

# Option 3-Pros

- Could be done in phases
- Minimal repairs could be cheapest
- Carson community keeps a school
- Separation of grades
- Fields and gyms are utilized – regulation gym at WREC
- CES/WREC space utilized for other purposes



# Option 3 - Cons

- Repairing minimal items could lead to bigger repairs and more costs
- CTE program
- Loss of long range savings on staff efficiencies



# Next Steps

- Gather input and evaluate where we are
- Look at systems that can be updated through grants
- Identify specific requirements to each building
- Prioritize improvements for each building
- Get specific cost estimates
- Continue to engage community in the process
- Investigate financial options

# Round Table Questions

- What are some additional Pros for option 3B?
  - What are some additional Cons for option 3B?
  - What didn't the committee consider that I wish they would explore further?
- 
- All documents from today can be found on the district's web site [www.scsd303.org](http://www.scsd303.org)
  - Please complete an exit sheet either paper/pencil or electronically on the website.