

Long Range Facilities Planning Follow Up Questions from May 1 Meeting

1) What was one (or more) learning that you took away from our meeting on May 1st?

- I learned that there was a lawsuit settlement that prevented us from accessing certain funds.
- I learned that some of the facilities issues are pressing and need to be addressed sooner rather than later.
- I have a better understanding of what work has been done over the last several years. Also, understanding the why.
- I wasn't aware of the lawsuit that has the judgment stipulation that the school district couldn't receive 50% match opportunities from the state on capital projects.
- *The complexity and the scope of what we've been asked to do.*

2) What were you "struck" by in the meeting on May 1st?

- I don't think I had any "aha" moments just yet.
- This committee work and the new learning is making me wonder, what are we going to do? It's a lot to think about. I think a good plan would be to come up with a few different fleshed-out ideas. A Plan A, Plan B, Plan C, etc. and the pros and cons can be listed for each.
- The amount of maintenance work being done on the buildings.
- Two things 1. That we still have asbestos in the roof of the buildings gyms. 2. That some people on the committee were struck by the fact that a BOND would be an option for funding capital improvement.
- *The complexity and the scope of what we've been asked to do.*

3) What questions about Stevenson facilities or our long range planning work still remain for you?

- I think I will develop questions as it becomes clear what the group seems to be moving towards as a solution. I already have ideas about what I would like to see, but I'm curious about the rest of the group.
- Is something like what I mentioned above something the committee would work on? Is the goal of the committee to decide, for example, to close CES and build a new PreK-6 school on that site? Or is the committee just gathering information for another, future committee to act on? I guess my question is, how far is our work going to go?
- What is the Educational impact of the deficient facilities? Educationally what are our current facilities not providing? What is the viability for placement of a new building? Also, why was the Stevenson Elementary school built with such a small cafeteria area, and reduced square footage, was it due to funding limitations? How can we in our long range planning ensure we are planning for best use of space & funds, to meet all the educational needs.

Long Range Facilities Planning Follow Up Questions from May 1 Meeting

- I'm curious what the current budget numbers look for Capital improvements are for each facility. I also want to see any school security improvement plans for hard security.
- *none...let's start hashing this out :)*

4) What questions remain for you, in general, about our work thus far?

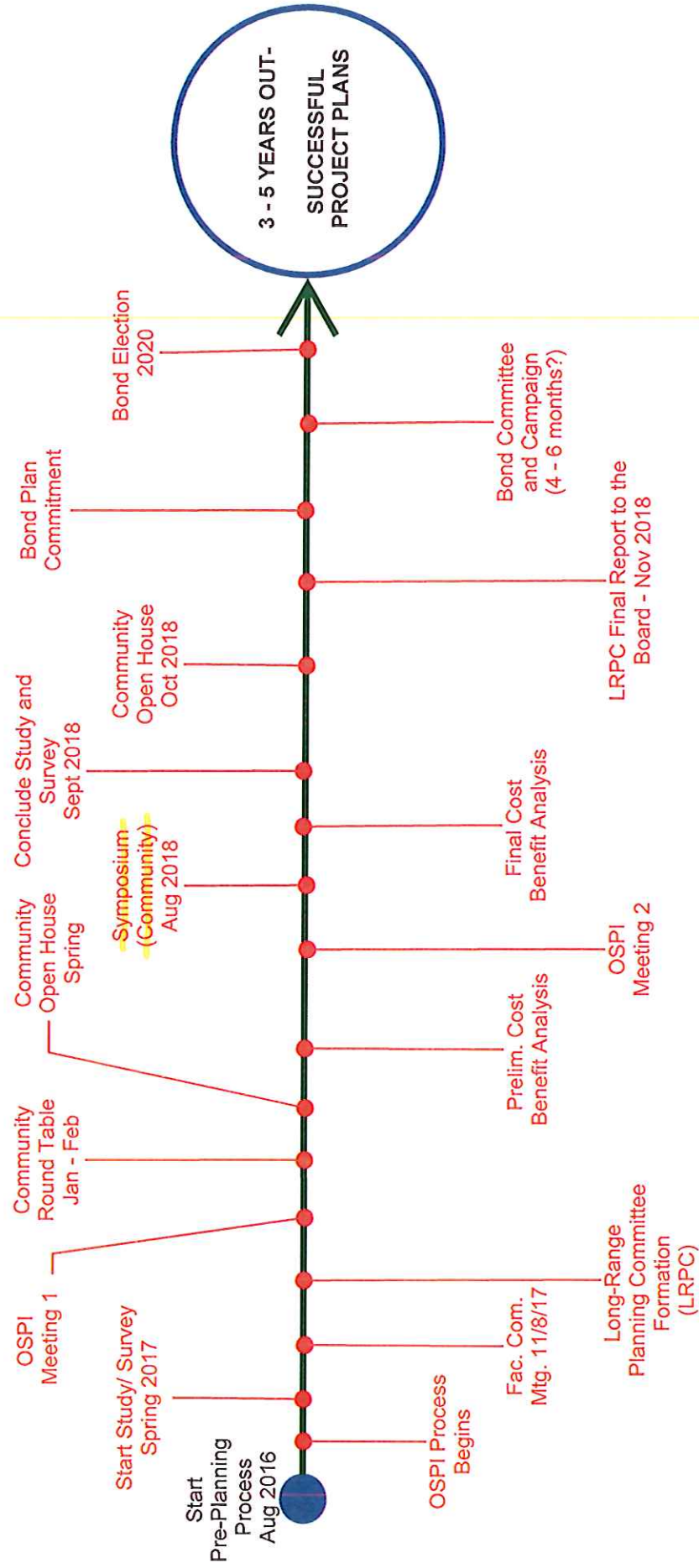
- I think once we look over the buildings and have an idea of budget limitations and funding possibilities it will all start to take shape.
- After the information gathering what is the next steps? Will we be working thru a plan?
- I would like to know the groups opinions on what their priority is about hard security and fire loss prevention improvements for each building is.
- none

5) How did our meeting on May 1st go? What went well? Suggestions for improvement?

- I enjoyed the meeting, but I felt like we got hung up answering questions that were asked prematurely. I would have like to see the full presentation before questions started flying.
- I think it's clear now that CES is the worst of the buildings, with SHS not far behind. It was a somewhat dry - but absolutely necessary - information meeting.
- I am not sure if the agenda was ambitious, but it felt rushed in parts trying to get thru everything.
- I'm not clear on who is on the committee at this point and who are listeners. We had some people "sitting in" for members on the first meeting that seem to have inserted themselves into the committee even though the people they were "sitting in" for were present at the second meeting.
- *Meeting went a bit long, too much detail. Meeting needed to be kept on track a bit better.*

6) There is 8th grade promotion on June 12 at 6:00-7:30, do we need to move the date? Is there a good day to meet?

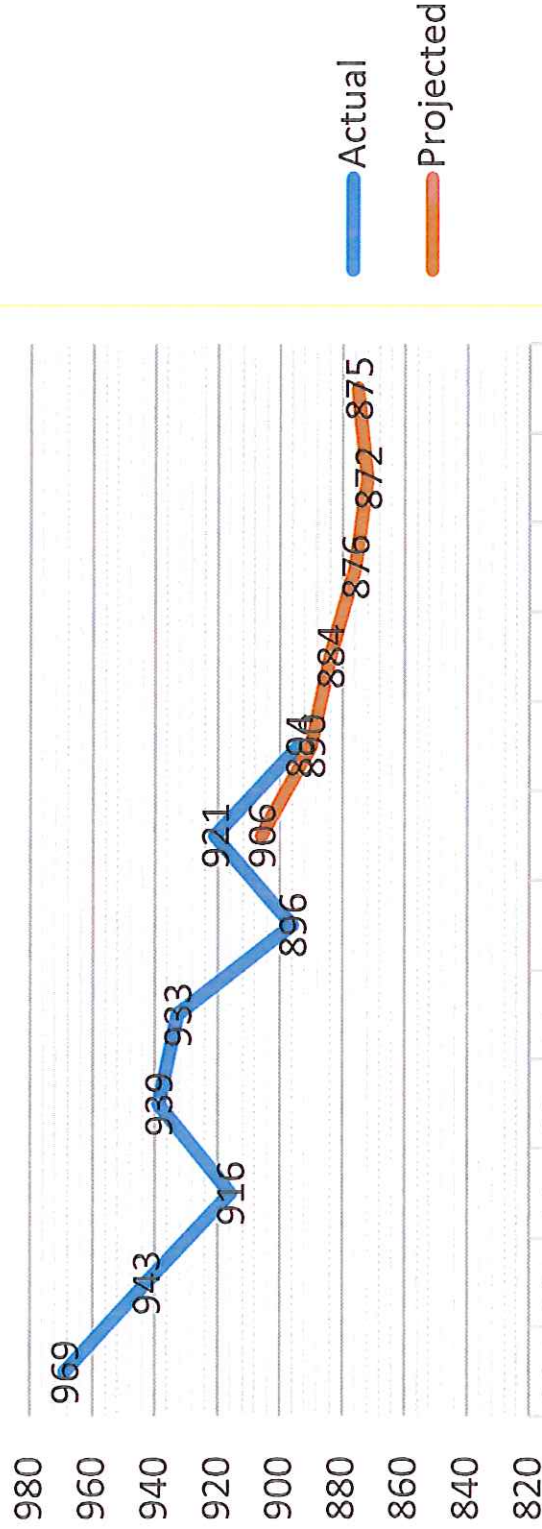
- I am open to any possibilities.
- That event does not pose a conflict for me.
- My oldest will be promoting so I can't make a meeting on June 12. I can do any other evening after that night.
- Any Tuesday in June works for me.
- *I don't have a need to change the meeting.*



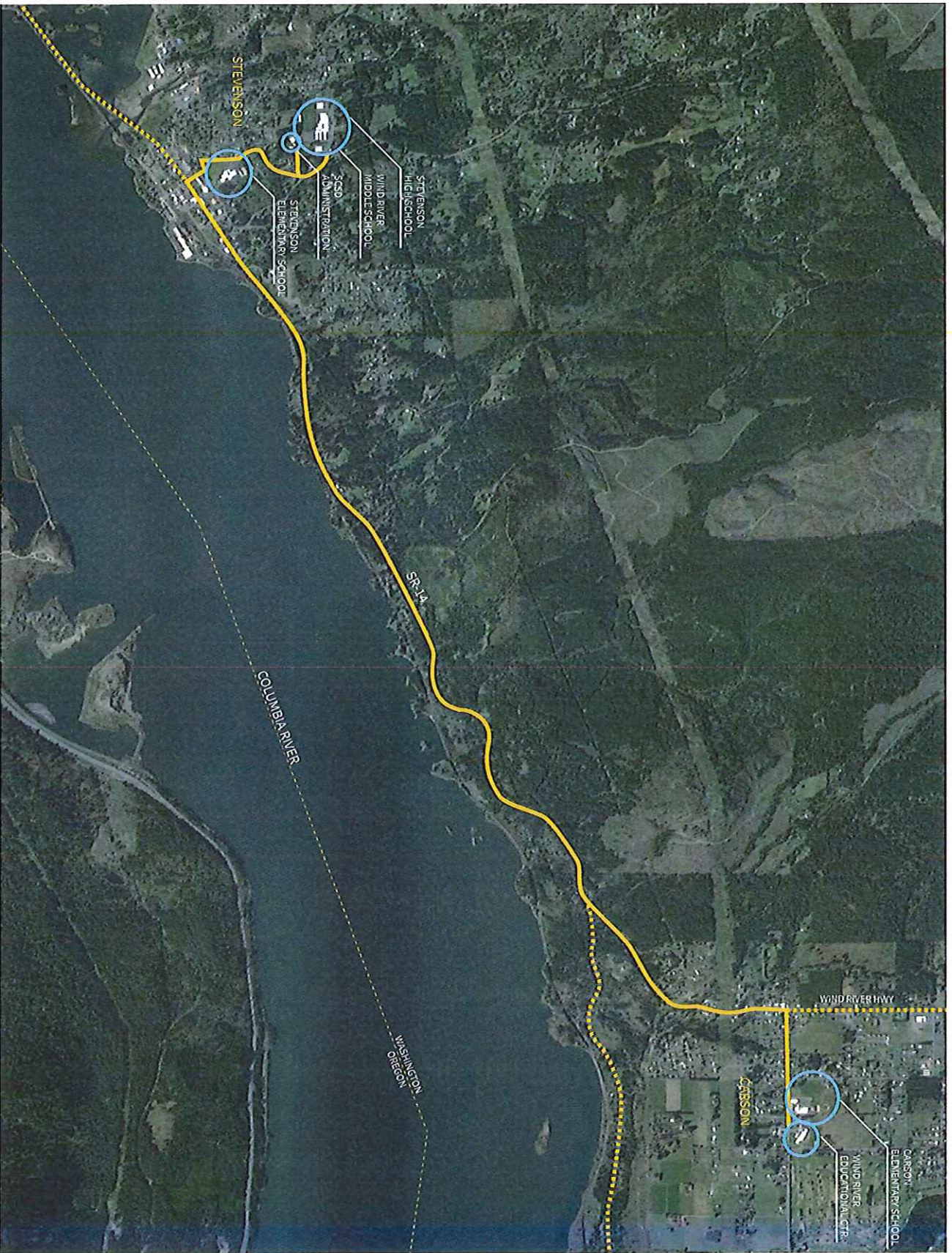
SCSD PRE - PLANNING DIAGRAM

November, 2017 Meeting

SCSD Enrollment as of 2015



	2010	2011	2012	2013	2014	2015	2016	2017	2018	2019	2020	2021	2022
Actual	969	943	916	939	933	896	921	894					
Projected							906	890	884	876	872	875	



STEVENSON-CARSON SCHOOL DISTRICT
 STEVENSON, WA

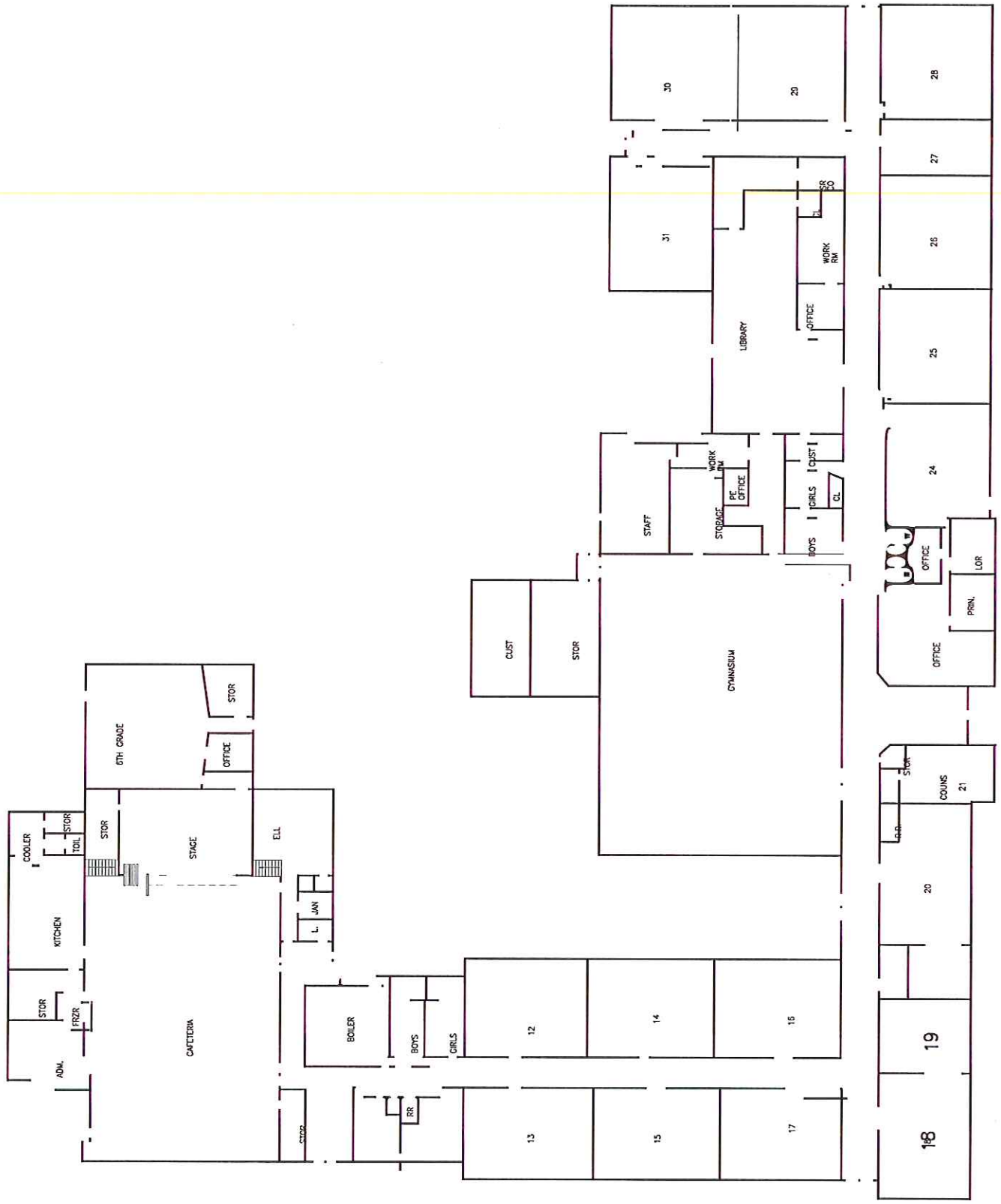


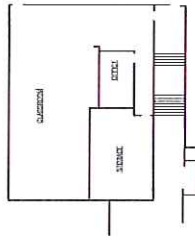
VICINITY MAP

JOB NO. 2016-0013
 DATE 08.15.16
 010 CHINA ST. #200
 N. WASHINGTON
 360.044.0271
 WWW.LSWARCHITECTS.COM

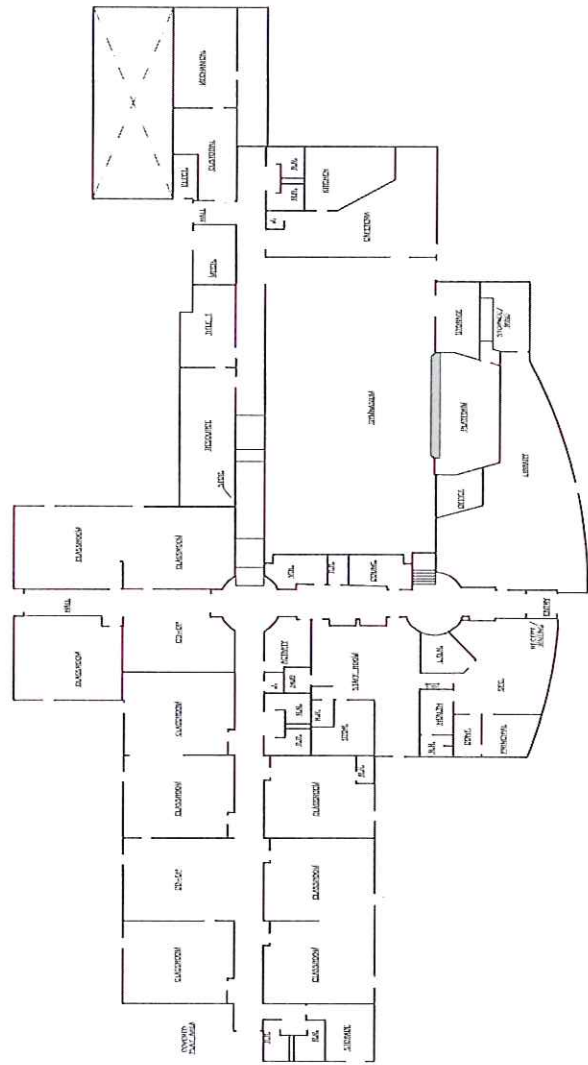


A.1

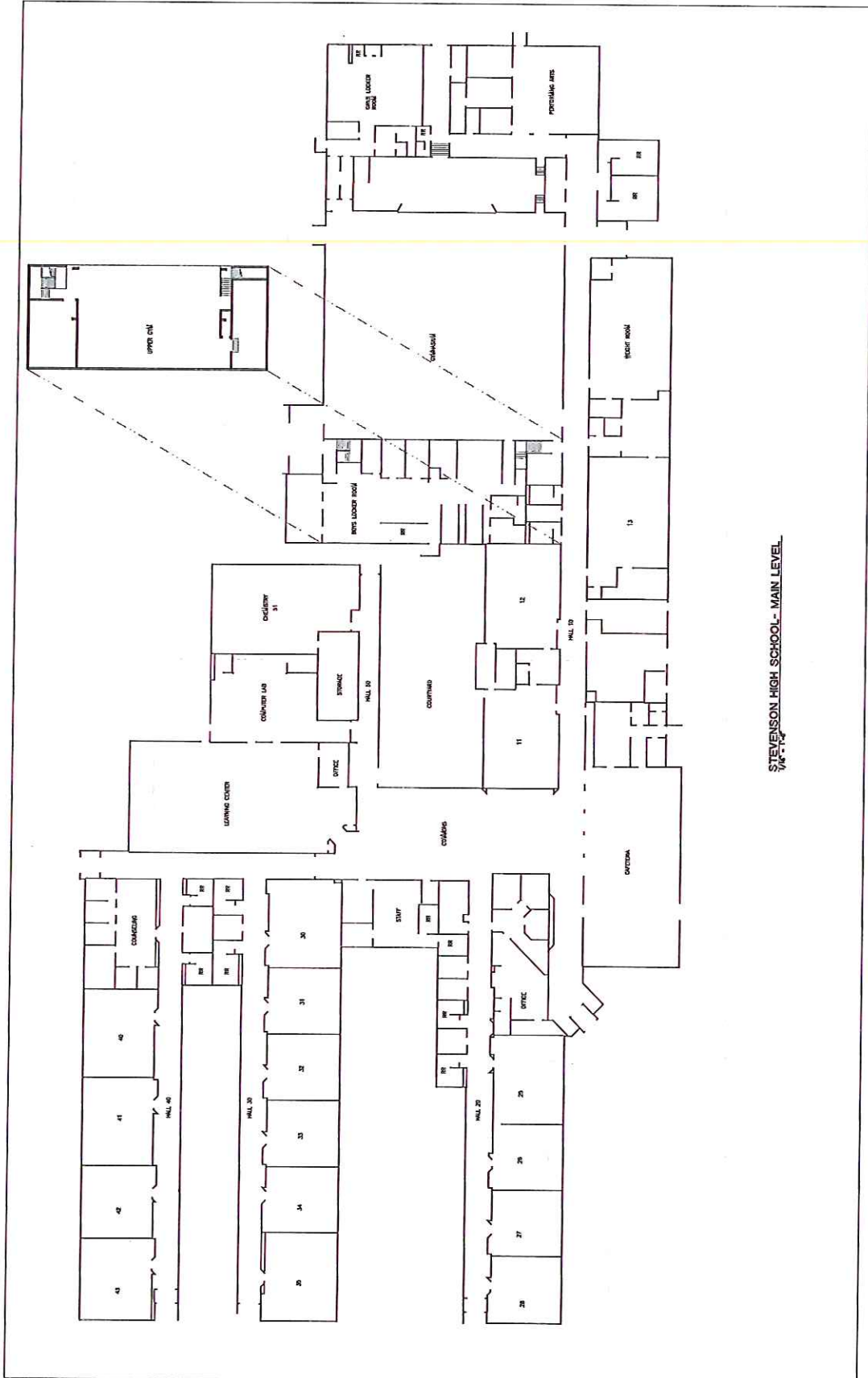




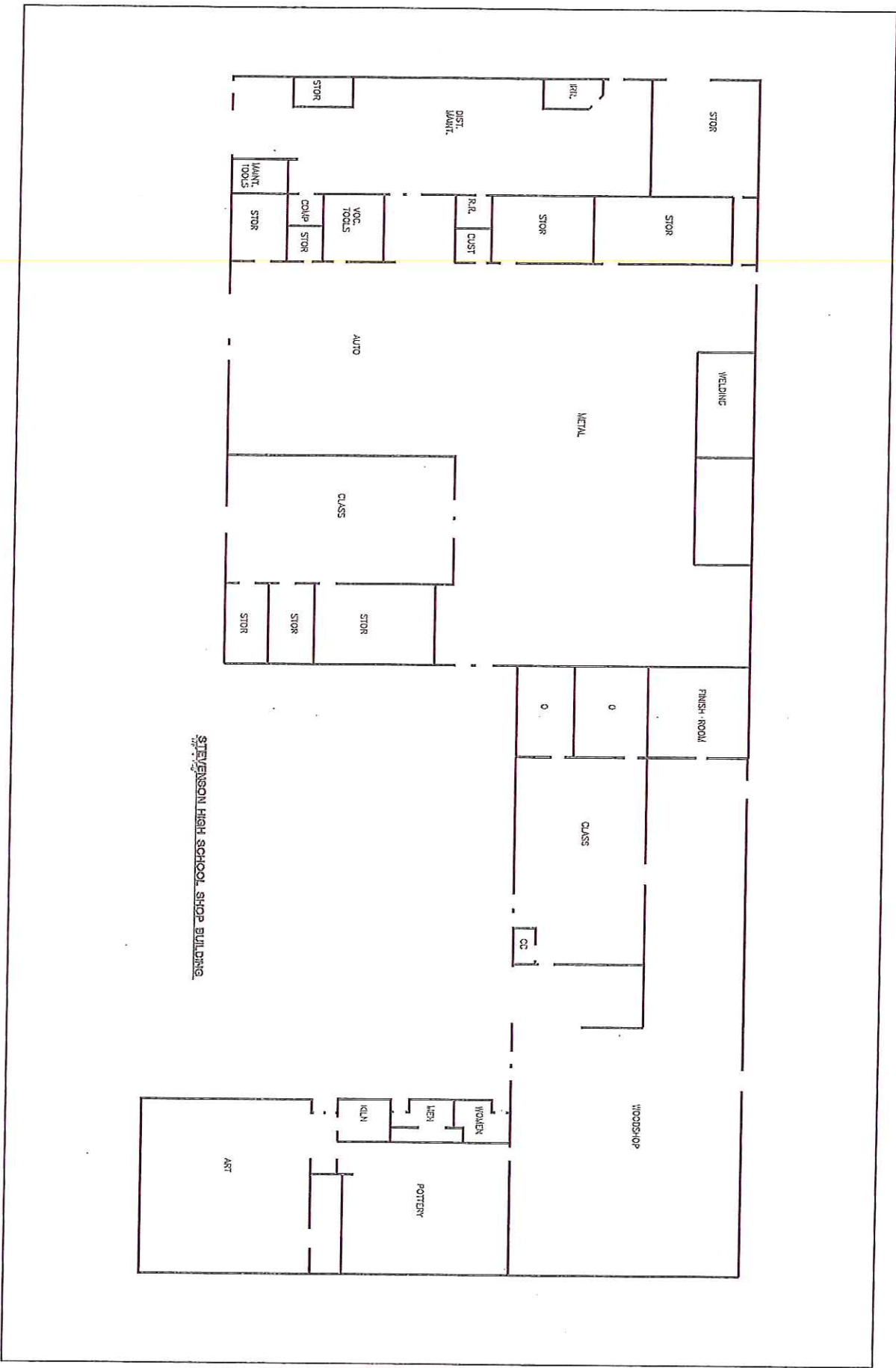
STEVENSON ELEMENTARY-LOWER LEVEL



STEVENSON ELEMENTARY- MAIN LEVEL



STEVENSON HIGH SCHOOL - MAIN LEVEL



STEVENSON HIGH SCHOOL SHOP BUILDING