

Stevenson-Carson Long Range Facilities Plan

May 2019



Why do we need a plan



Targets/Needs



Configuration



Concepts/
Schemes



Next Steps



Stevenson-Carson Long Range Facilities Plan



Why do we need a plan



Targets/Needs



Configuration



Concepts/
Schemes



Next Steps



Why do we need a plan?

- **Utilize the eligibility for State matching funds**
- **Seek out grant funds**
- **To have a long-range facilities plan for the future students of the Stevenson-Carson School District.**
- **To provide efficient buildings for an aging infrastructure, reduce maintenance costs and provide for a growing student population.**
- **To prioritize future maintenance projects**
- **Because our students and community are worth it**

Why do we need a plan?

- **Carson Elementary – Building is aging (exceeds 65 years) and reaching life expectancy**
 - **Major renovation is needed and not fiscally responsible**
 - **Health and safety may become a concern in the future**
 - **Maintenance costs are increasing annually**
 - **Extensive remodels can be more costly than new construction**

Why do we need a plan?

- **Stevenson High School**
 - **Major renovations that have occurred to the building**
 - **Office, commons and main entry - 1996**
 - **Learning Center, computer labs and student hallway-2004**
 - **Kitchen and cafeteria - 2008**
 - **Gym floor and track – 2014, 2018**
 - **Currently identified needs**
 - **Updated locker rooms**
 - **Ventilation and cooling**
 - **Windows**
 - **Flooring**

Why do we need a plan?

- **Capacities are being reached in the buildings**
 - **SES – 240 students, in 2002 built for 11 classrooms currently need 13 classrooms**
 - **CES – 281 students, 14 classrooms, 2 computer labs – all spaces are occupied**
 - **WRMS/SHS – 415 students, 23 classrooms, 3 computer labs – all spaces occupied**
 - **Projected continued growth over the next 20 years**

Why do we need a plan?

- **Appropriate class size in alignment with state guidelines**
 - **Kindergarten – 20 students**
 - **First through third grades – 22 students**
 - **Fourth through sixth grades – 24 students**
 - **Middle and High School – 26 student average not to exceed 32 in any one classroom**

Why do we need a plan?

- **Have a building for grades 6-8 to address their unique developmental and educational needs**
- **Need for specialized spaces**
 - **Music**
 - **STEAM – Science, Technology, Engineering, Art and Math – Lab space**
 - **CTE – Career and Technical Education**
 - **Small group learning**
 - **Meeting Rooms**
 - **Athletic spaces**

Stevenson-Carson Long Range Facilities Plan



Why do we need a plan



Targets/Needs



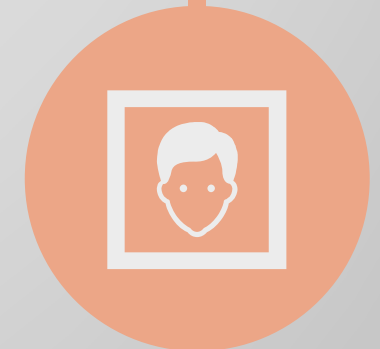
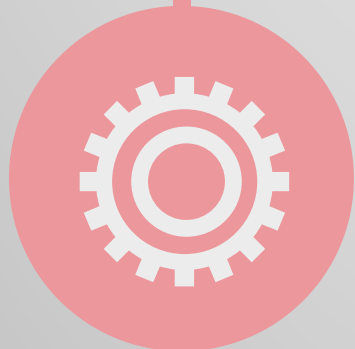
Configuration



Concepts/
Schemes



Next Steps



Targets/Needs

- **All buildings**
 - **Safety and security updates**
 - **Efficiencies updates – HVAC, energy controls, maintenance, etc.**
 - **Learning Center/Library**
 - **Technology – ongoing updates**
 - **Flexible learning spaces**
 - **Optimum learning environment – air quality, lighting, thermal comfort**
 - **Sustainability**

Targets/Needs

- **Elementary School Grades PreK – 5**
 - **Anticipated Enrollment 75 – 100 students per grade**
 - **450 – 600 students in the school**
 - **25-30 classrooms**
 - **Cooperative learning spaces**
 - **Kitchen/Cafeteria**
 - **2 gyms or combination of gym and activity space**
 - **Music room**
 - **Small group learning spaces**
 - **Playground spaces**

Targets/Needs

- **Middle School Grades 6-8**
 - **Anticipated Enrollment 75 – 100 students per grade**
 - **225 – 300 students in the school**
 - **11-12 classrooms**
 - **Band/Music room**
 - **Cafeteria/Kitchen**
 - **STEAM (Science, Technology, Engineering, Art and Math) spaces**
 - **Gym with seating**

Targets/Needs

- **High School Grades 9-12**
 - **Anticipated Enrollment 75 – 100 students per grade**
 - **300 – 400 students in the school**
 - **20-22 classrooms**
 - **CTE (Career and Technical Education) Spaces**
 - **STEAM (Science, Technology, Engineering, Art and Math) spaces**
 - **Upgraded locker rooms**
 - **Flooring**

Stevenson-Carson Long Range Facilities Plan



Why do we need a plan



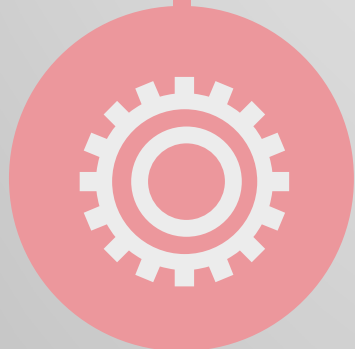
Targets/Needs



Configuration



Next Steps



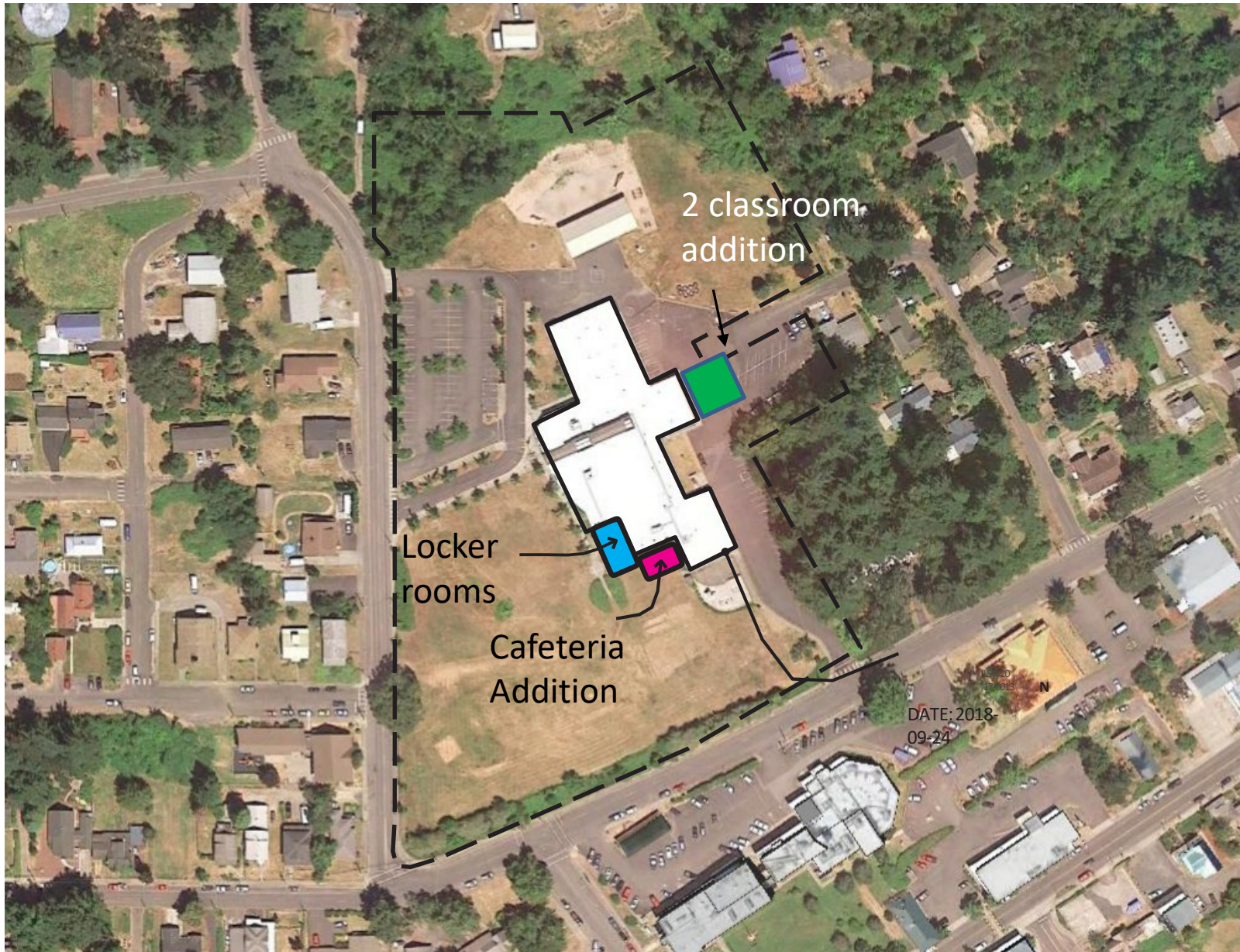
Committee Preferred Configuration - 3 Campuses

Prek-5 at WREC, 6-8 at SES

Why Selected

- **School in Carson**
- **The quickest to accomplish**
- **Least impact on education**
- **Separation of grades**
- **Most cost effective**
- **Secondary staff could be shared between buildings**
- **Little work needed at SES**
- **Major renovation at SHS**
- **Projected cost exceeding \$57.5 million**





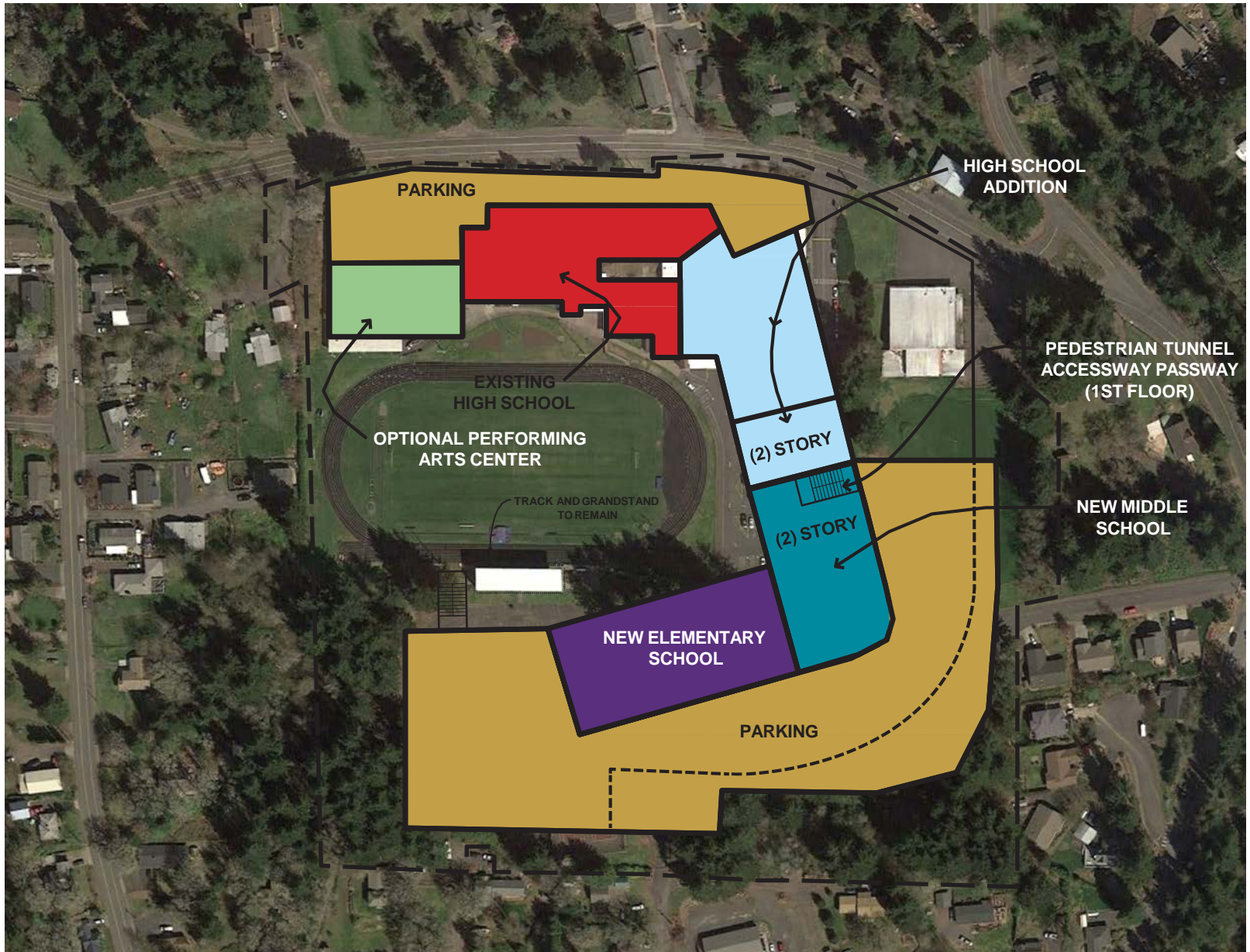
OPTION 4- STEVENSON ELEMENTARY SCHOOL SITE Grades 6-8
SCSD - SITESTUDY

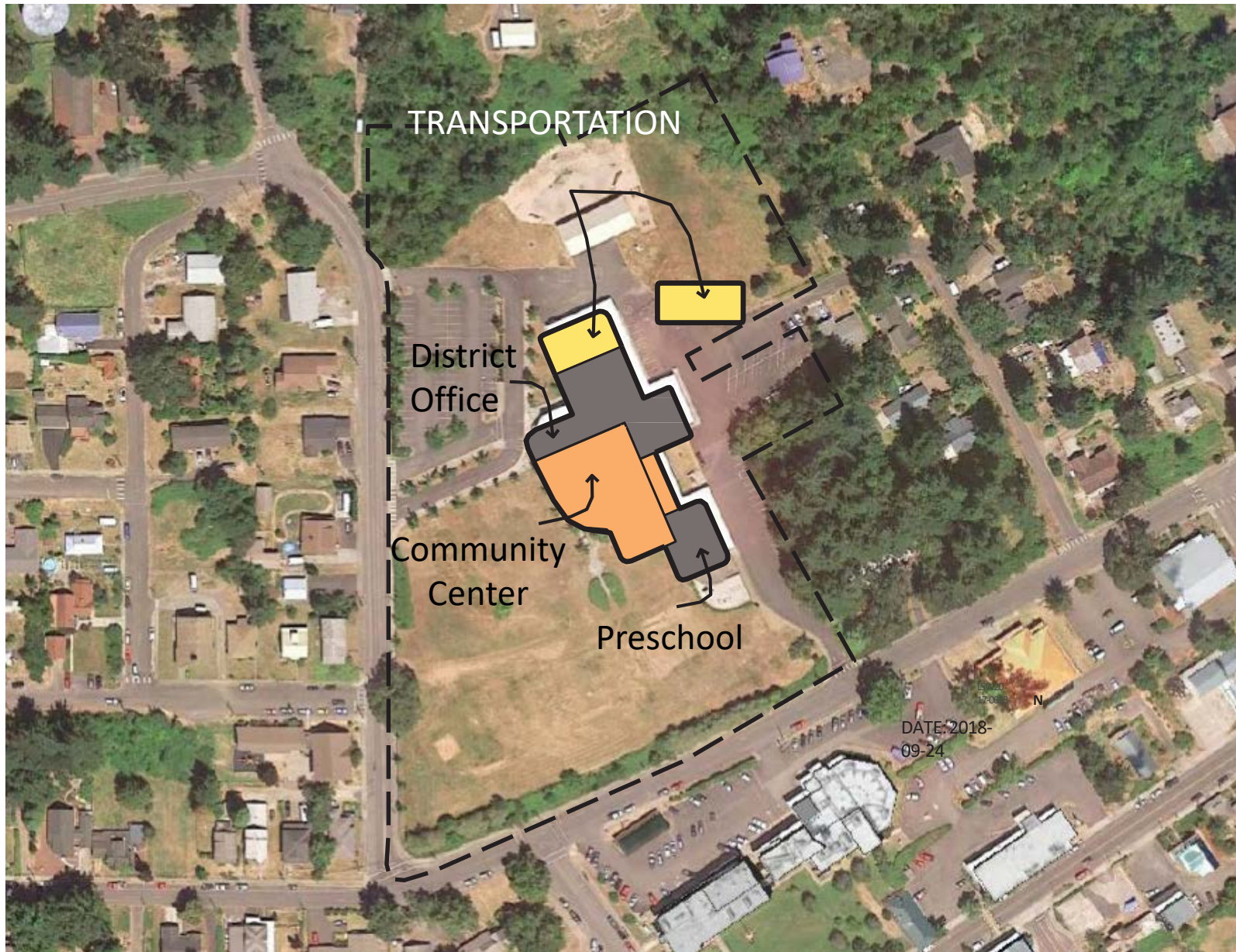
Configuration – One Campus

Prek-12 at SHS

Why not selected

- **Lack of outdoor spaces**
- **Not enough parking space**
- **Would eliminate school in Carson**
- **Transportation to Carson for sports**
- **Does not adequately address/separate the unique developmental and educational needs of different age groups of students**
- **Cost**
- **Projected Cost exceeding \$89.4 million**





OPTION 1 - STEVENSON ELEMENTARY SCHOOL SITE
SCSD - SITESTUDY

Configuration – 2 Campuses

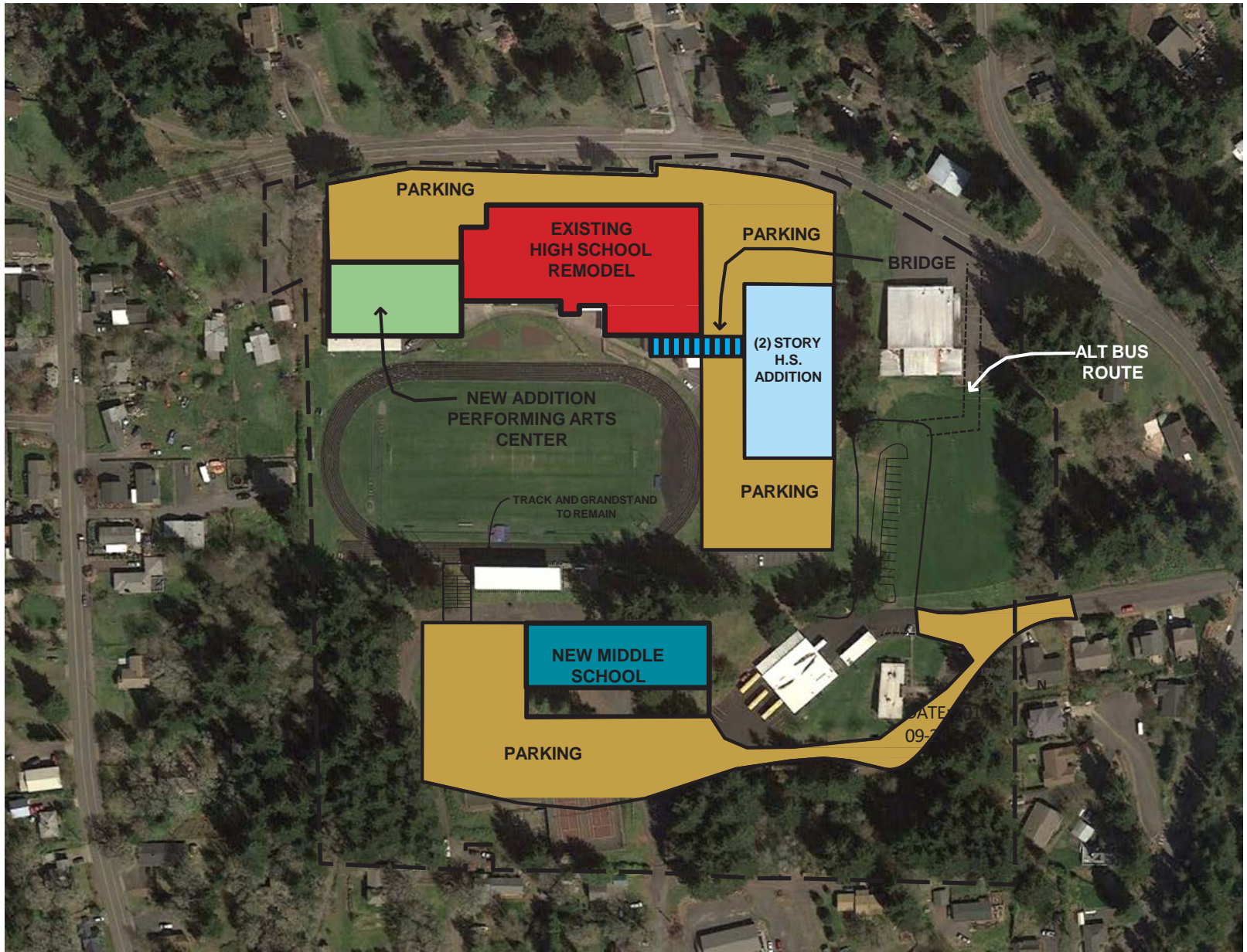
Prek-5 at SES and 6-12 at SHS 6-8 in new building on site

Why Not selected

- Not enough parking spaces**
 - Limited green space at SES**
 - Would eliminate school in Carson**
 - Transportation to Carson for sports**
 - Cost**
-
- Projected cost exceeding \$73.25 million**



OPTION 2A- STEVENSON ELEMENTARY SCHOOL SITE Grades PreK – 5
SCSD - SITESTUDY



OPTION 2A - STEVENSON HIGH SCHOOL SITE Grades 6-12

SCSD - SITESTUDY

Configuration – 3 Campuses

Prek-5 at SES and 6-8 at WREC

Why Not selected

- **CTE (Career and Technical Education) Program separation between buildings**
 - **Elevators: initial and ongoing costs**
 - **Limited green space at SES**
 - **Limited parking at SES**
 - **Traffic patterns/congestion**
 - **Cost**
-
- **Projected cost exceeding \$71 million**





Configuration – Costs

Projected costs (in millions) in excess of

- ***Preferred* – 3 campuses Prek-5 WREC, 6-8 SES, 9-12 SHS - \$57.5**
 - Approximately \$32 million would go to renovation at SHS
- **3 campuses Prek-5 SES, 6-8 WREC, 9-12 SHS - \$71**
 - Approximately \$32 million would go to renovation at SHS
- **2 campuses Prek-5 SES, 6-12 SHS - \$73.25**
- **1 campus Prek-12 SHS - \$89.4**

Stevenson-Carson Long Range Facilities Plan



Why do we need a plan



Targets/Needs



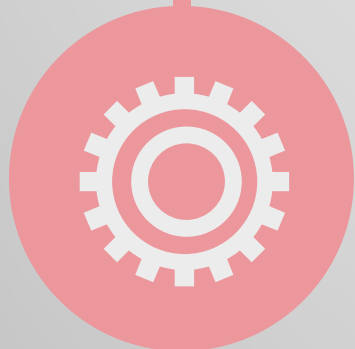
Configuration



Concepts/
Schemes



Next Steps



Committee Preferred - Concepts and Schemes

Prek-5 at WREC and 6-8 at SES

- **WREC grades PreK-5**
 - **Addition of 13-18 classrooms (need a total of 25-30)**
 - **Flexible learning spaces**
 - **Kitchen/Cafeteria**
 - **2 gyms or combination of gym and activity space**
 - **Specialized small group learning spaces**

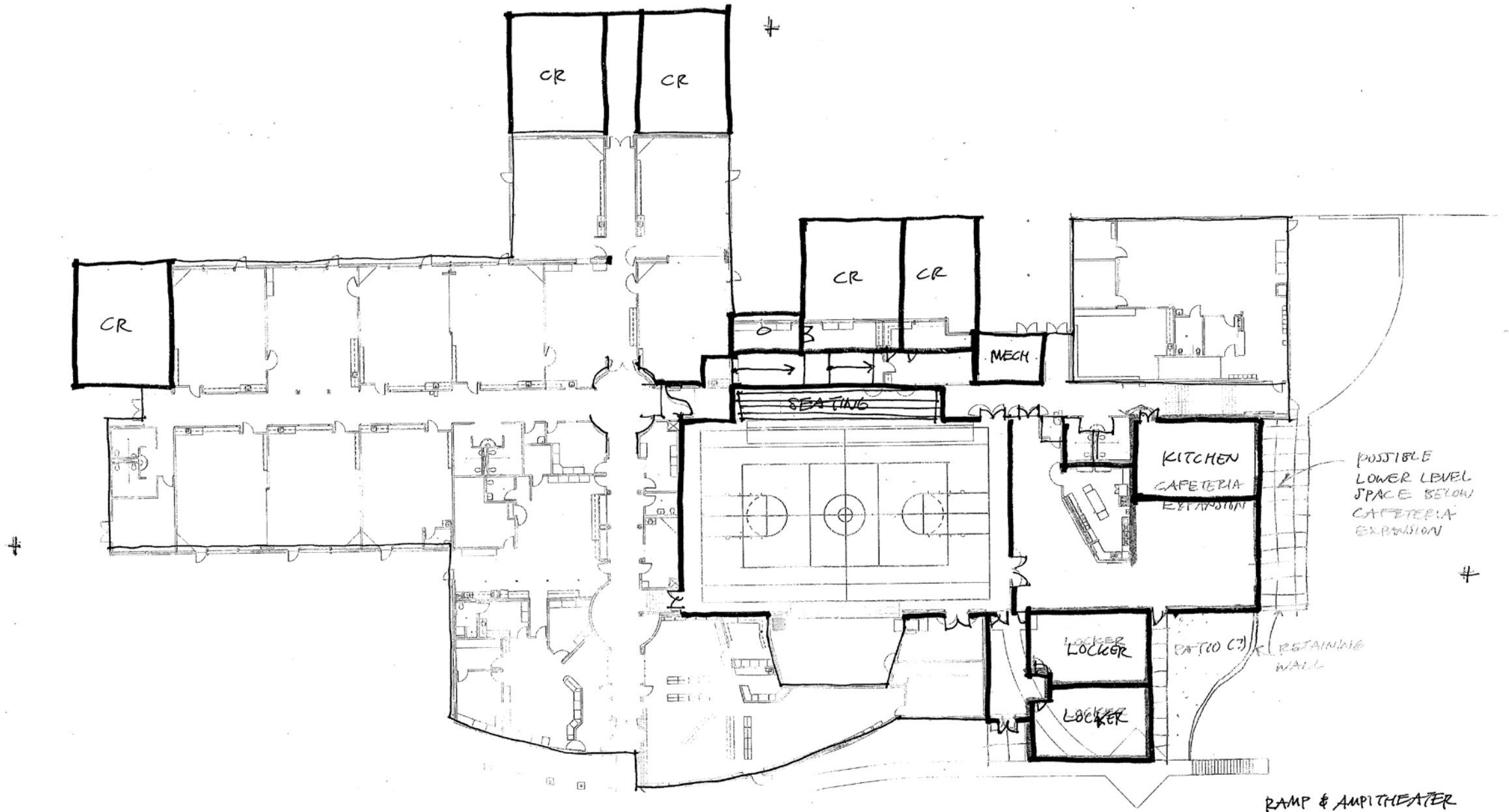


WREC PK-5 GROUP 2
 NTS 4/23/19

Committee Preferred - Concepts and Schemes

Prek-5 at WREC and 6-8 at SES

- **SES grades 6-8**
 - **Addition of 2-4 classrooms (need a total of 11-12)**
 - **Cafeteria**
 - **Locker Rooms**
 - **Gym seating**



SES - 6-8 (GROUP 1+3)

NTS 4/15/19 4/23/19

#

Concepts and Schemes

Prek-5 at SES and 6-8 at the WREC

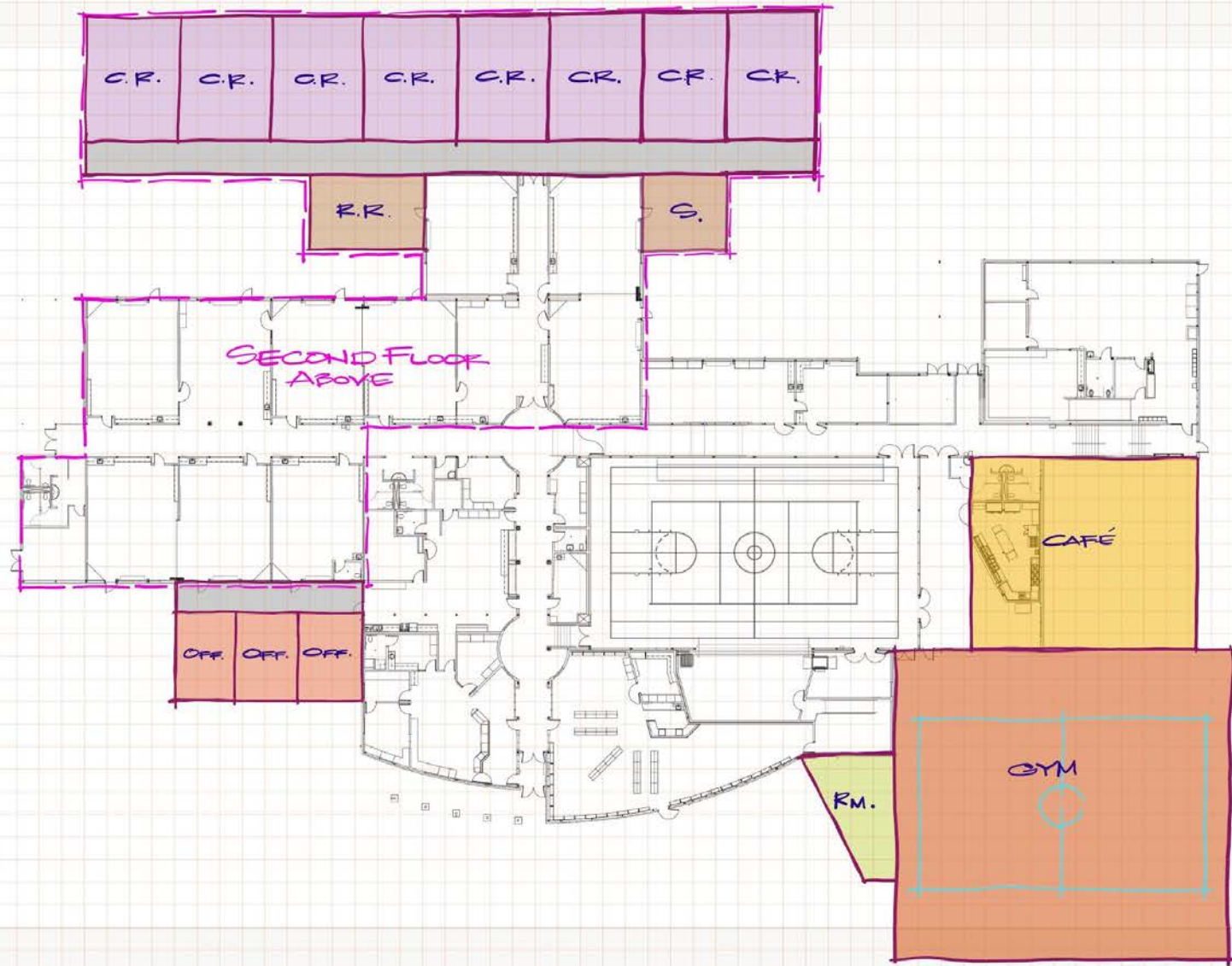
- **SES grades PreK-5**
 - **Addition of 10-18 classrooms (need a total of 25-30)**
 - **Flexible learning spaces**
 - **Cafeteria**
 - **2 gyms or combination of gym and activity space**
 - **Music room**
 - **Specialized small group learning spaces**



CONCEPT "A"



CONCEPT "B"



CONCEPT "C"

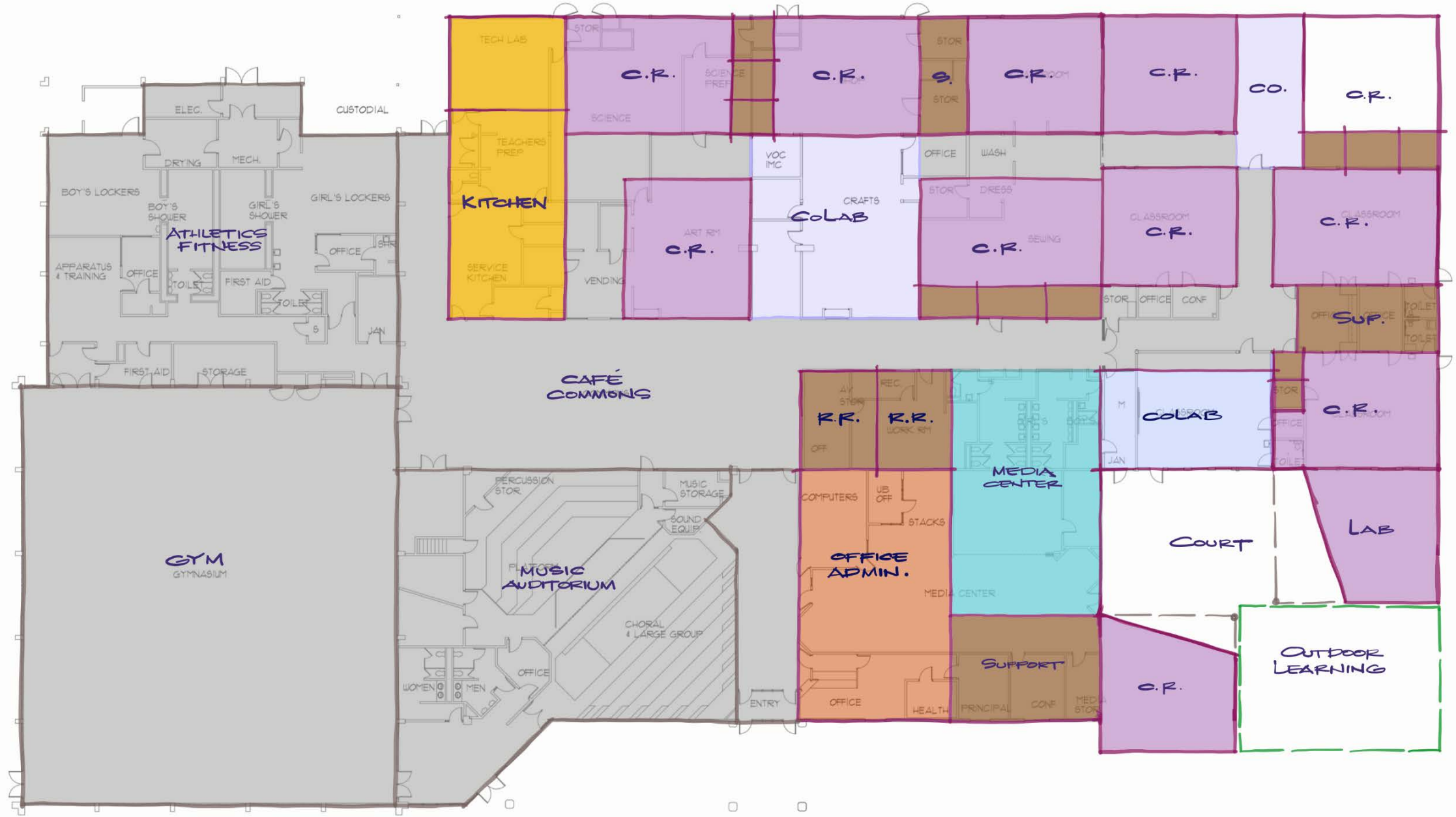
Concepts and Schemes

Prek-5 at SES and 6-8 at the WREC

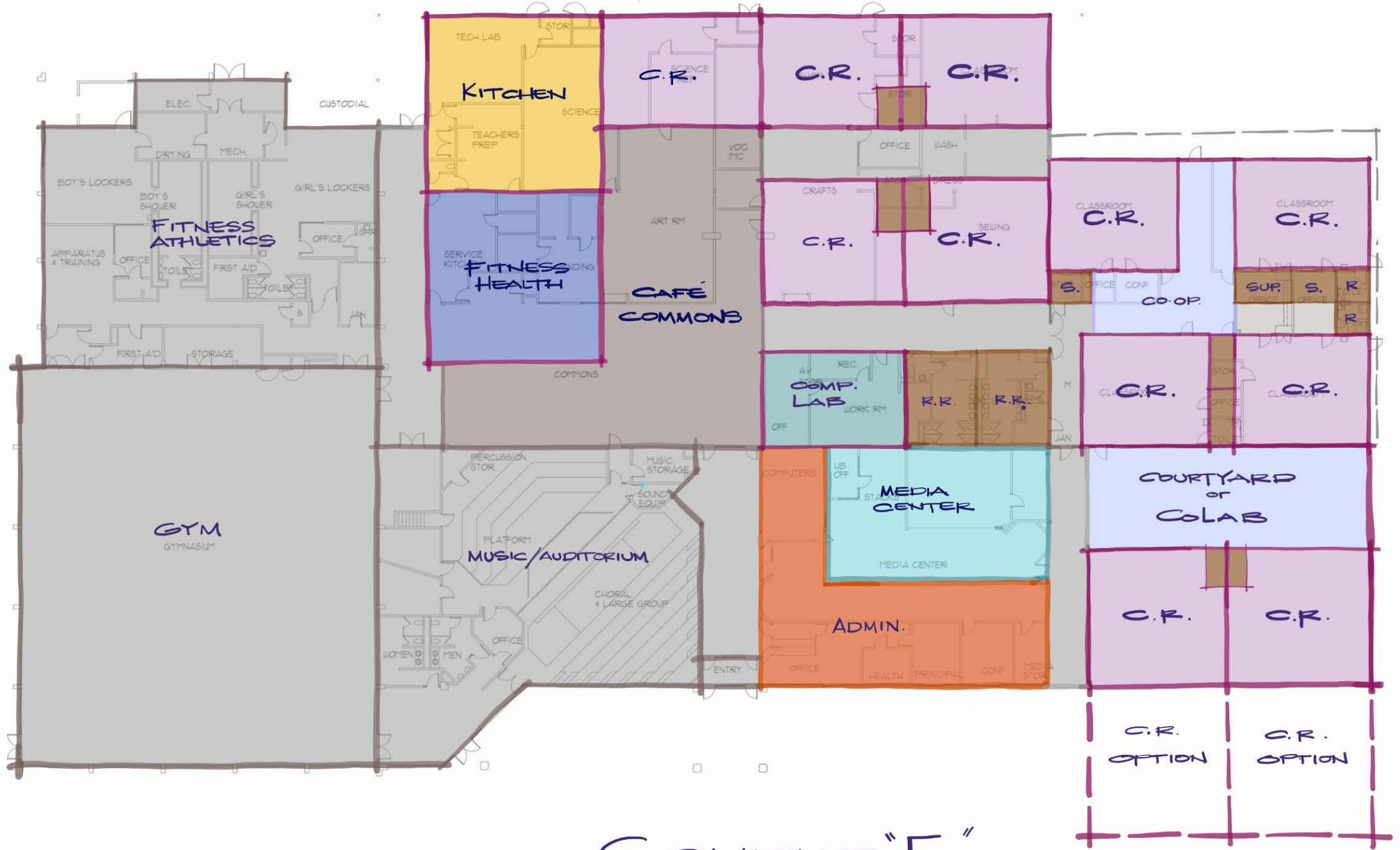
- **WREC grades 6-8**
 - **11-12 classrooms**
 - **Cafeteria/kitchen**



SCHEME "B"



SCHEME "C"



SCHEME "E"

Stevenson-Carson Long Range Facilities Plan



Why do we need a plan



Targets/Needs



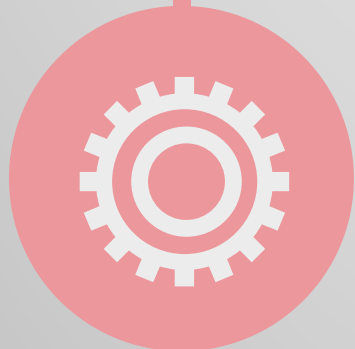
Configuration



Concepts/
Schemes



Next Steps



Next Steps

- **Finalize conceptual drawings with more detail needs of each building**
- **Narrow cost estimates**
- **Continue to gather community input**
- **Seek board approval of recommendation**
- **Look at financing options – grants, state funds, public/private partnerships, local revenue**
- **Develop timeline for financing/design/construction**

Next Steps

- All supporting documents can be found on the district website www.scsd303.org under department/facilities/long range planning
- Any questions can be directed to Brian Howe at howeb@scsd303.org