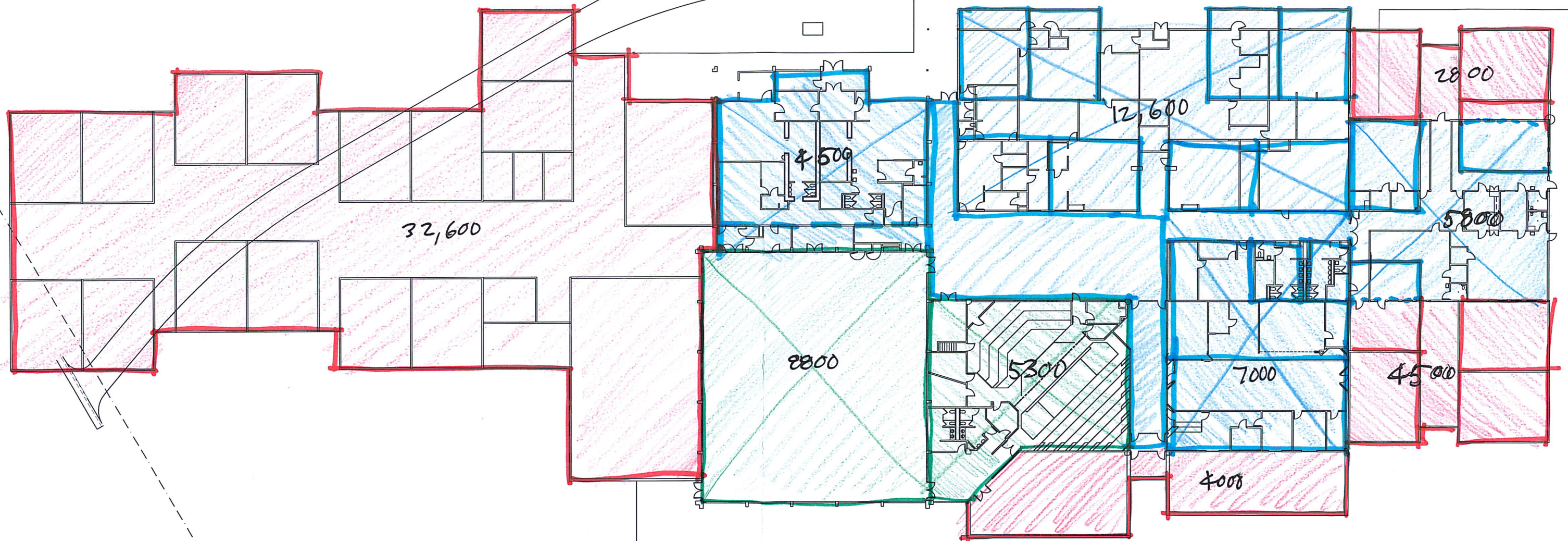
 = (NEW) 32,600 + 4000 + 4500 + 2800 =

43,900 (425-580) = 18,657,500 - 21,950,000




 = (REM) 4500 + 930 + 4700 + 12600 + 7000 + 5800 = 35,550 (375-450) = 13,331,250 - 15,997,500

 = (LT.REM) 8800 + 5300 = 14,100 (100-150) = 1,410,000 - 2,115,000

33,398,750 - 40,062,500



WREC = K-5 FS

 = NEW
 = REMODEL
 = "LIGHT" REMODEL

JAN 2020

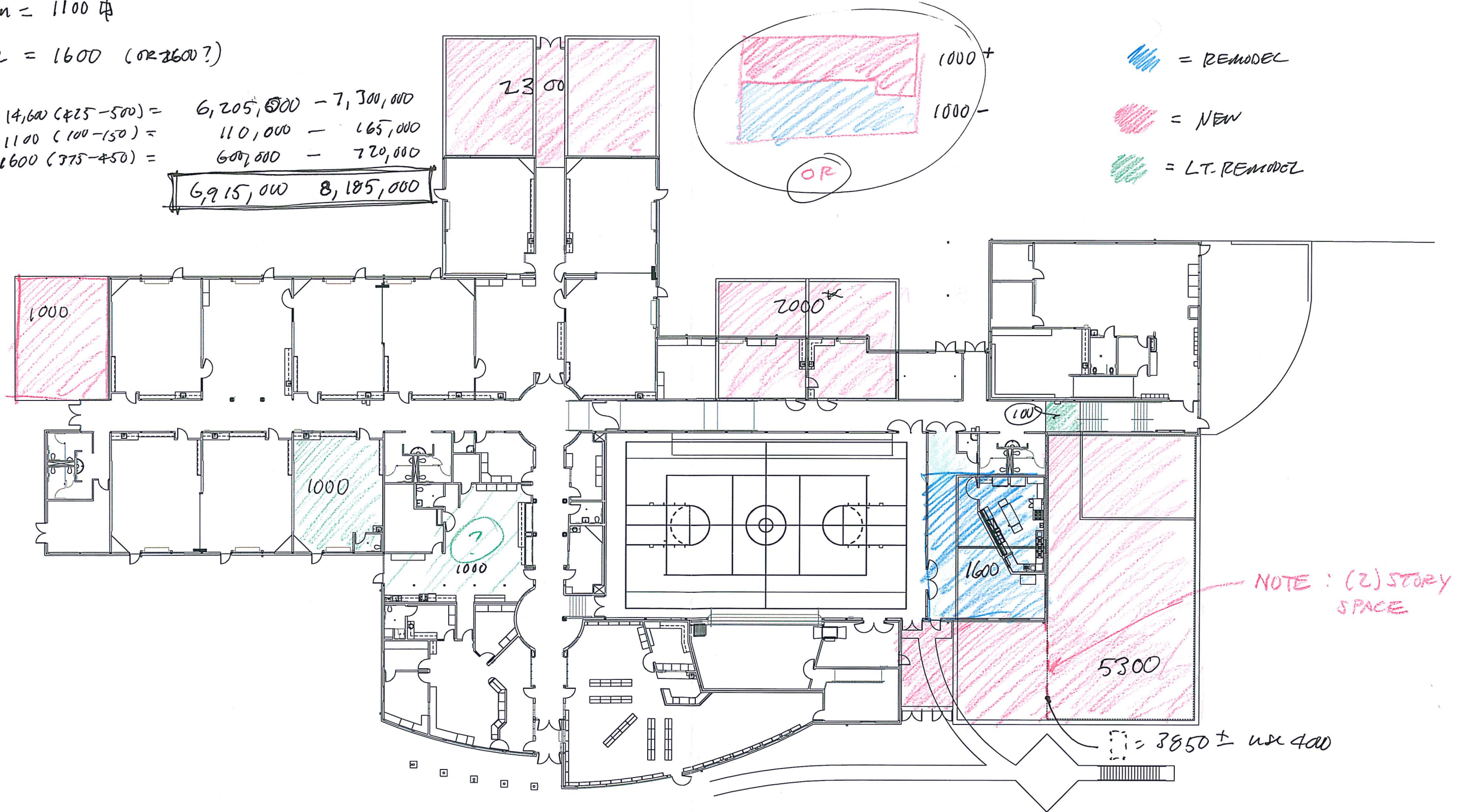
$$NEW = 1000 + 2300 + 2000^* + 5800 + \overset{400}{\cancel{5800 \text{ Below}}} = 14,600 \quad (\Delta 2800 SF)$$

LT. PSM = 1100 中

Remainder = 1600 (or 2600?)

$14,600 (425 - 500) = 6,205,000 - 7,300,000$
 $1100 (100 - 150) = 110,000 - 165,000$
 $1600 (375 - 450) = 600,000 - 720,000$

6,915,000 8,185,000



$$SES = 6-8 \mu s$$

JAN 2020